

Address Citra Gran citywalk 2 nr 12, Jalan Alternatif km4 •
17435 Cibubur Jakarta Timur (ID)
Telephone +62 21-84303701
Fax +62 21-84303690
Contact Mr ing. J. Grasmayer
Email baja.eng@cbn.net.id



SC Engineering BV, Nijkerk, the Netherlands, and PT Baja Engineering Indonesia, Jakarta, Indonesia are established in 2003. Our companies prepare detail calculations and detail drawings of reinforced- and prestressed concrete structures.

In our office in the Netherlands we acquire projects and manage project scope progress.

We maintain contacts with the client during execution of our works to discuss any project related matters such as scope interpretation, possible solutions of details to choose from, progress, etc.

In our engineering department in the Netherlands we prepare structural calculations, based on final design calculations provided by the client.

In our office in Jakarta Indonesia, we prepare detail drawings of structural concrete structures, mainly bridges, tunnels and industrial complex structures.

In our office we use Allplan Engineering. All our drafting is done in 3D. The contract drawings we receive from the client, most in 2D, autocad format, are imported into the Allplan software.

This information is then transformed into 3D objects, from which dimension drawings are prepared.

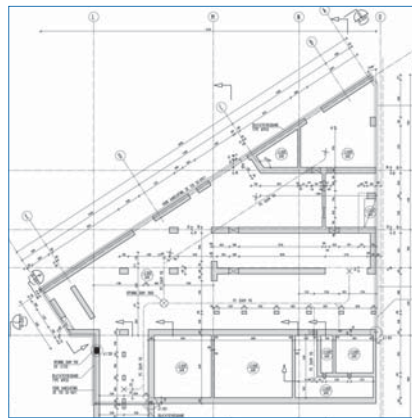
After approval of the dimension drawings the 3D models of rebar are prepared. From these models the rebar drawings are generated, including bending schedules.

During the project execution we maintain close contact with our office in the Netherlands and with the client. With the client we discuss possible details such as construction joints, bar shapes, splices, cast in items, etc.

Both our offices have excellent knowledge of International standards (Dutch/British/European/American) and more than 30 years experience with civil, marine, industrial and building structures.

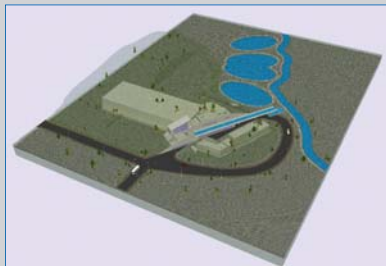
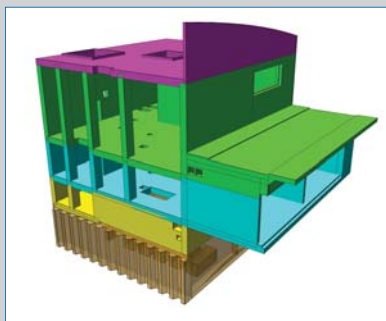
In our office in Jakarta we prepare drawings to any international standard or client desired settings for drawings.

Most of our clients are contractors for civil structures such as Ballast Nedam, Heijmans, Koop Tjuchem, Van Spijker and design offices such as Haskoning, IC+E, Oranjewoud.



Quote of the jury:

"The concept of the whole project (tower and other buildings) is a good example of the capabilities of Allplan. The project is well integrated in the surroundings. By modelling the structure in 3D, Allplan was used to its extents. The presentation by means of a movie shows the interaction of the construction with the country-side and vice versa."



Introduction

On the outskirts of Hilversum (NL), an area called "Anna's Hoeve" is situated next to a protected park "Goois Natuurreservaat". The municipality of Hilversum has decided to renovate and intensify clean up this area, in order to provide an area suitable for housing and recreation.

Pollution

The development of this area is very important as it is contaminated to such a high level that soil and water reservoirs (ponds) must be cleaned thoroughly. If not cleaned, the area is a threat to the people that live there as the groundwater will be contaminated as well.

Housing projects

In the "Anna's Hoeve" area, several housing projects will be realized in harmony with the existing nature. The housing projects will partly finance the renovation and clean up works for this area.

Waste water treatment plant

Also in this area an existing waste water treatment plant will be replaced by a new and modern one. This plant is designed in accordance with the latest technology for waste water treatment, so more space for housing is left.

Recreation

With new sport facilities and places for recreation in a well designed landscape, future residents will find themselves in an agreeable environment.

RWZI Hilversum

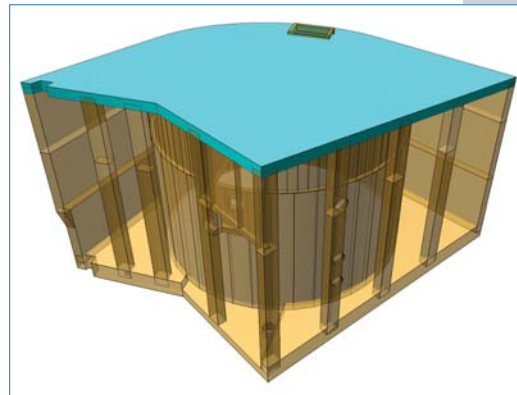
The department for research and projects of Waternet has designed a modern waste water treatment plant. The civil structures of this project are designed by Royal Haskoning and Snelder architects. As a result, a set of 2D contract drawings has been issued for detailing.

Assigned by Royal Haskoning, SC Engineering BV and PT Baja Engineering Indonesia have prepared 3D models of the concrete structures and dimension drawings for the construction with Allplan Engineering.

The 3D models were made to facilitate 3D calculations with SCIA+ESA PT. Here we followed the comprehensive instructions from the client, so the 3D models of the structures could successfully be used in the SCIA+ESA PT software.

The waste water treatment, the so called "membrane bioreactor-ship", is conducted inside large concrete structures. This complex of structures is placed inside a hill. Only the control tower is exposed.

The results of the calculations will be used to automate rebar design with Allplan Engineering again.



Waste water treatment plant in Hilversum

Assigned by Dutch design office Royal Haskoning, SC Engineering BV and PT Baja Engineering Indonesia have designed 3D models and dimension drawings of a modern waste water treatment plant in Hilversum (NL). The client used the 3D models to prepare structural concrete calculations in 3D with SCIA+ESA PT. The dimension drawings are prepared for construction. After the calculations are finalized the results will be used to automate rebar design with Allplan Engineering.

