



e News

NL FR EN DE CZ

April 2007

NEWS

[<printable version>](#)

Dear eNews reader,

One of the most remarkable novelties is without doubt the launching of the online '**SCIA Movie Centre**'. Both demo and training movies of our software solutions are gathered here, but also films recorded during staff activities give an impression of who we are and what we stand for ... be sure to take a look at it.

Furthermore we already announce the **upgrades of Allplan 2006.2 and SCIA•ESA PT 2007.1** and also that we have made **interesting contacts in India and Dubai**. In those regions occurs a lot of promising market possibilities for SCIA.

We wish you a lot of reading pleasure with all the news in this edition of the SCIA eNews ...

- » **Corporate News: SCIA in pursue of a continuing solid growth on the international level**
- » **Product News: What's new in Allplan 2006.2**
- » **The Market: Complex project in the shape of a palm tree in Dubai**
- » **SCIA launches a brand-new online movie centre**
- » **Tips & Tricks: Displaying effective width of a rib in SCIA•ESA PT**

SCIA in pursue of a continuing solid growth on the international level

We are pleased to report on the growth track of SCIA. With an increase of **18% in revenue in 2006**, SCIA was among the fastest growing companies within the **Nemetschek Group**.

Nemetschek AG started 2007 with a major take-over in the CAD field i.e. the company **Graphisoft**. Nemetschek has now over 1,000 employees and a consolidated turnover of approx. 140 Million €, being the largest software house worldwide focusing on the construction industry only.



In the first quarter of 2007 SCIA continues the positive trend with new growth figures in nearly all regions where we operate.

The growth is also reflected in the international recognition of **our product leadership**. SCIA is successfully introducing new technologies such as roundtrip engineering, true analysis (with analysis & structural modelling), snapCheck multi-code design, and others.

A recent trip by the SCIA management in **India & Dubai** attracted many new prospects. The cooperation with CADs in the UK and India drew a great interest from the market as well from the press: on 1st March SCIA was in the press and on TV in Chennai (India). We kindly invite you to read the articles published in "**News Today**" and "**Trinity Mirror**".

Considering the construction rage in these regions (currently 400 skyscrapers under construction in Dubai!), SCIA will soon give an adequate answer. We will keep you posted!

[▲ top](#)

What's new in Allplan 2006.2

In august 2006 Allplan 2006.1 was launched on the BeNeLux market. The focus in this version lied on increased ergonomics. A number of functionalities and principles were reconsidered with a view to arrive at a more intuitive manner of design and modelling. Some examples of this are the track lines, vast snap functions and extended point input.

New in Allplan is the principle of "grips", which allows modifying objects rapidly and graphically. The number of line types and hatchings, as well as XRef-functionalities, had also been strongly extended. As from v2006.1, the layout surroundings also allowed design windows with a random form, from polygonal input to an adoption of an existing outline (e.g. 2D-circle) using geometric recognition. Besides the extension of the already existing functionalities in the architecture module, also new functions occur, we can mention the **legend generator**, stair assistant, 3 new foundation objects and the libraries of new partners (PEIKKO and ERICO-LENTON).

In the engineering part the **FormFinder** functionality has been extended with "handles", hereby a more flexible use of the existing bar forms is possible. For an overview of all innovations we refer to the document "**What's new in Allplan 2006**".

► **Nemetschek acquired a majority in Graphisoft**, the makers of Archicad, and launched a public takeover bid for the remaining shares. [more ...](#)

► **SCIA and Alldesign Hellas** have set-up a **partnership regarding sales activities** in Greece [more ...](#)

► After the success of the last edition, SCIA and Nemetschek will organise this spring a '**Business Training Centre**' for our business partners in **Germany, Austria and Switzerland**.

► Next **19th April**, the judging committee will gather for the **evaluation of the projects** of the User Contest 2007.

EVENTS

► Please note the following 5-day event in your agenda (23 - 27/04/2007): '**Partners-in-Steel**', an organisation of Kaltenbach. This year's theme is '**Robots in Profile**'. [more ...](#)

UPDATES

► Customers can download the following service packs in our [free download section](#).

- » **SCIA•ESA PT 2007.0.128**
- » **ESA-Prima Win 3.90.125**

TRAINING

In the following months a lot of **trainings** are organised in our offices of **Herk-de-Stad** and **Arnhem** with, among others, the following topics:

- » **SCIA•ESA PT**
- » Basis course
- » Tips & Tricks
- » Concrete
- » EC3 Theory en practice
- » ...

Allplan Engineering

- » Formwork shell and reinforcement functions (03 & 08 May 2007)

Allplan Architecture

- » Basis course (24 & 25 April 2007)

Here you find [all training dates with a programme overview](#) and you can register online.

JOBS

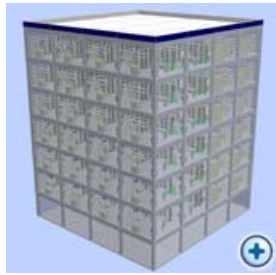
SCIA's customers are invited to add their **job vacancies free of charge** in our '**SCIA Jobs Network**'.



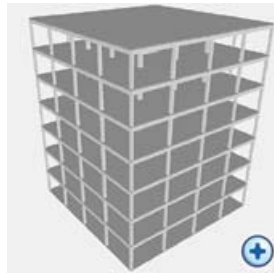
Please also check **SCIA's Job Openings**. Good luck!

GALLERY

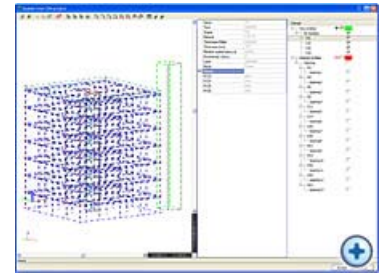
Some screenshots from **Allplan DTM - 3D Digital Terrain Modelling**



Model in Allplan



Model in IFC



Model in SCIA•ESA PT

In the near future, the upgrade **v2006.2 will be launched**. This version will already be **Windows Vista-ready**. In this way, Nemetschek still wants to reinforce its leader position and underline its pioneering role. Hereby already some innovations of this new version:

- In v2006.2 **the Nemetschek Softlock will be improved** and more synoptic. Allplan 2006.2 will have more memory to address. **Up to 3Gb additional memory is available** for the animation of large quantities of data.
- Windows Vista does not support Winhelp anymore. This has as direct consequence that all online-help had to be converted to HTML-help.
- **The most recent version of IFC (2x3) is also supported.**
For the interested ones, Nemetschek puts an own, free LFC-viewer at their disposal; it can be downloaded soon. A nice gadget is that with this viewer it is possible to convert the IFC-model to a Google Earth compatible file.
- **Support for Autocad 2007 files**, both input and export.

In the field of engineering there are also some new items.

- Console reinforcement as FF-bar group.
- New functionalities are foreseen within the framework of roundtrip engineering (Allplan 2006.2 in collaboration with SCIA•ESA PT 2007.1).

[top](#)

Complex project in the shape of a palm tree in Dubai

Royal Haskoning, customer of SCIA and **D103 International** have just won a price with an architectural program in Dubai. They entered a contest launched by Nakheel, the main property developer in the Emirates. **It concerned an innovating project in the shape of a palm tree.**



Nakheel recently invited some architects over to reflect on a concept for a project on **Palm Jebel Ali**, one of the **three Palm Islands of Dubai**. Royal Haskoning, in partnership with the international design office D103, caught the attention with an exceptional project.

The project of Royal Haskoning is about a **surface of 300.000 m²** dedicated to sports activities, residential residences, a shopping centre, offices... the whole leaving a broad place to nature with public parks and marinas.

From the viewpoint of the architecture, Royal Haskoning imagined two groups of three buildings, which, due to symmetry effects, form the shape of a palm tree. But the **star element of the project is the design of an iconic, very graphic and very futuristic looking bridge.**



"The concept relates to a **bridge connecting nature and innovation**. This bridge represents several million dollars", explains Syb van Breda, architect of the project, "the symmetry between the outstanding buildings reflects also the symmetry of the palm islands. We want to recreate this reflection with this project".

For the development of this concept, **Royal Haskoning worked with design teams of Bangkok, Amsterdam and Dubai**. Syb van Breda can not mention a precise figure concerning the cost of the project, he estimates however that such a program in Europe would arrive at about 250 M. Euro.

[top](#)

SCIA launches a brand-new online movie centre



We are proud to announce the launch of our new online '**SCIA Movie Centre**'.

If a picture says a thousand words, a video will tell you a complete story. Via a standard internet browser you can easily catch a large collection of movies and animations. You can even download them and watch them later offline.

For now we start with three main sections:
Demo Movies, Services Movies and Event Movies.



Demo Movies

This section includes several product demonstration files. All movies are



categorized in product groups and themes. Have a quick look at our SCIA•ESA PT movies; they will demonstrate the strong features and secrets in a new and refreshing way.



Services Movies

Here you will find some typical e-learning services movies for SCIA customers. Our 'Customer Service Division' will publish many exercises that are also given during our standard SCIA•ESA PT training sessions. Additional movies such as tips & tricks will be published very soon, so be sure to visit the 'SCIA Movie Centre' frequently.



Event Movies

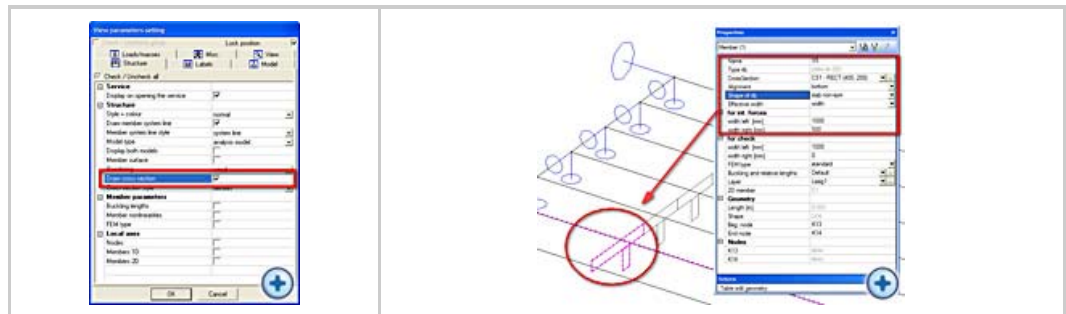
The movies you can grasp in this division are related to SCIA's events and parties, speeches, interviews, etc... We invite you to watch the interview with Mr. Devolder of VK Engineering. This interview took place at the beginning of this year and has been presented during SCIA's Kick Off meeting 2007. Also have a look at an amusing movie about SCIA's Core Values.

At this moment there still are some movies without voice-over and we are frequently updating these by adding commentary. We kindly invite you to regularly visit our '**SCIA Movie Centre**' and to add this link to your favourites: <http://www.scia-online.com/movies>

▲ top

Tips & Tricks: Displaying effective width of a rib in SCIA•ESA PT

There exists a very easy and useful function in SCIA•ESA PT that allows the user to **easily view the effective width of a rib**. In the view parameters the user has the possibility to choose for the option '**Draw cross-section**'.



When this option is checked on, the user will see that the effective width of the rib is drawn on the structure. With this option **the user can graphically interpret his input better**.

Archive Tips & Tricks



▲ top

About this SCIA eNews

- » We would like to encourage you to give us your current e-mail address, if the one we used for this message, would not be correct or if you want us to send it to another address.
- » If you would like to **unsubscribe** from this **eNews**, just send us an e-mail with '**unsubscribe**' as the subject followed by the e-mail address to be deleted.
- » Please let us know if there are any topics in which you are interested. We would also like to hear any suggestions or ideas you may have on improving this eNews. **You can respond here ...**

▲ top

SCIA Group nv - Industrieweg 1007 - B-3540 Herk-de-Stad
Tel: +32 13 55 17 75 - Fax: +32 13 55 41 75

Copyright © 2007 - info@scia-online.com

SCIA International is member of the
Nemetschek Group

