

NL FR EN DE CZ

Home | Company | Solutions | References &amp; Markets | News &amp; Press | Support &amp; Downloads | Contact

## Latest News

- ▶ Scia has passed the second and last test on IFC 2x3 certification with its flagship product SCIA • ESA PT v. 2008. [more...](#)
- ▶ Charles Wilby has joined Scia as the regional head of sales international. [more...](#)
- ▶ Nemetschek Scia presents the new Scia Engineer 2008. See the [what's new page](#).
- ▶ Nemetschek Scia welcomes you to visit their [totally rebranded website](#).
- ▶ We are looking for engineers with a background in construction and structural engineering wishing to pursue a career as **support or sales engineers** based in the UAE and other locations throughout Asia. Please contact [Charles Wilby](#) for more details.
- ▶ Our offices in Herk-de-Stad (B) and Arnhem (NL) will be closed on the 1st and 2nd May.

## Events

- ▶ Nemetschek Scia is organising a series of seminars around the UAE in June. Please contact [Charles Wilby](#) for more details.
- ▶ On the 22nd, 27th and 29th May, Nemetschek Scia organizes **releasedays "Scia Engineer"** in the BenNeLux. Note it down.

## Software update

- ▶ Customers can download the following **service packs** in our [download section](#).
  - SCIA•ESA PT 2007.1.170
  - ESA-Prima Win 3.100.170

## Training

- ▶ **SCIA•ESA PT**
  - Basis course
  - Tips & Tricks
  - Concrete
  - Dynamics
- ▶ **Allplan BIM 2008**
  - Basis course (14th & 15th April 2008)
  - (21st & 22nd April 2008)
- ▶ [Online training calendar 2008 & online registrations ...](#)

## Software Gallery

- ▶ **New features within our brand new Scia Engineer 2008**
  - Design of cellular beams

Dear eNews reader,

This month we have some extraordinary news... Scia gets a new name and we will not let this go by unnoticed! Also the company logo has been transformed into a versatile and colourful picture which immediately strikes the eye. At the same time the flagship of Scia, SCIA•ESA PT, gets a new, more easily pronounceable name and of course a brand new matching logo.

What attractive, powerful name has been chosen? What does the new logo look like?

## Discover all about the rebranding of Scia!



## Indeed, a new name for Scia and its topproduct SCIA.ESA PT

Today **Nemetschek AG** has made a clear statement to the market concerning its future direction. Being the holding company of world software producers for the AEC (Architecture - Engineering- Construction) Market, Nemetschek is **stepping up its brand appearance**. Nemetschek brings a major benefit with its software brands: **the freedom to implement visions**.

Among the software products from Nemetschek are:

- **Allplan** (an integrated CAD platform for architectural, engineering and fabrication drawings),
- **Archicad** (the virtual architectural CAD software),
- **Vectorworks** (a user friendly powerful CAD environment for design purposes) and
- **Cinema4D** by Maxon (a multimedia presentation and creation tool).

Scia is the leading supplier of advanced engineering design software. Scia is also leading the **Nemetschek Engineering Software Group** with other products coming from Frilo, Glaser and Nemetschek Precast. Nemetschek also has software companies for cost management, facilities management ... The multi-colour logo proves the variety of companies that belong to Nemetschek AG.



The **pluralism** in solutions from Nemetschek gives the closest representation of the real construction world where many partners cooperate to realize construction projects. The experience of bundling a variety of solutions towards one diversified construction market results in professional software offerings; versatile, innovative and future-oriented. This is what Nemetschek stands for: professional software for the AEC market. The pluralism of the product offering leads to a change in how professionals execute the design, build or management work. Nemetschek is **'moving minds'**.

Scia is part of the worldwide branding of Nemetschek. As of today Scia takes on a new name **'Nemetschek Scia'**, yet keeping its distinctive character of **'Inspiring People to move Limits'**. Its contribution consists in **'Enabling Innovation in Construction'**. Nemetschek Scia clarifies that it belongs to a strong family, together with Nemetschek Allplan, Nemetschek Graphisoft, Nemetschek VectorWorks and the others.



We have decided to rename at the same time our topproduct **SCIA•ESA PT** (Engineering Structural Applications Professional Technology). A more easily pronounceable name will be welcomed by many. The **new name** has been chosen to have a close identification of the software users with their preferred product: **Scia Engineer**. Scia (Scientific Applications) keeps its roots, yet moves on to convince engineers worldwide that it is THE software to be used for modelling, analysis, design and detailing by structural engineers. Together with the launch of the release 2008 the new name Scia Engineer is introduced.

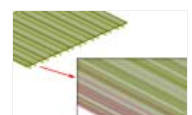
A **new product logo** was conceived which represents one of the many features of the product: designing bridges. It fits well in the product companies of Nemetschek AG, as the Allplan BIM 2008 logo shown above.

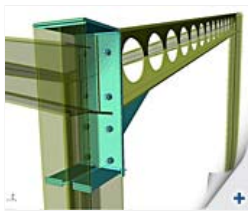
The Nemetschek brand communication is worked out in several media: websites, brochures, leaflets, house style, etc. Each product company of Nemetschek will be recognizable through some strong images illustrating the use of the software. For Nemetschek Scia one of the chosen projects was built by our clients Alfa 04 and Dopravoprojekt in Bratislava: the Apollo Bridge. It illustrates the art of designing remarkable structures with remarkable software.

Top

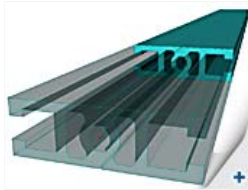
## Scia Engineer – Version 2008: Improvements and new features

As introduced in the company news section of this eNews, our flag product SCIA•ESA PT has been renamed to **Scia Engineer**. The brand new version 2008 contains a vast number of smaller or larger improvements and a set of completely new features. Let us start with the improvement that will definitely be welcomed by everyone. **Speed**: this single word says it all. Version 2008 offers significantly faster response in many fundamental operations such as regeneration of graphical windows, geometrical manipulations, document management, code checks of concrete members, optimisation of steel members, etc. Another improvement is that you are now able to run **several instances of Scia Engineer on a single computer**, a detail that may sometimes prove invaluable.





- Design of aluminium structures



- 2D members with ribs and loading panels

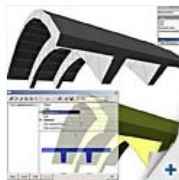
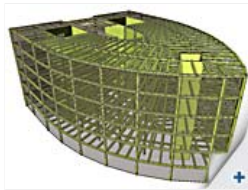


image 1

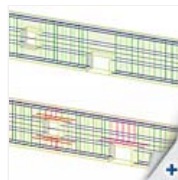


image 2

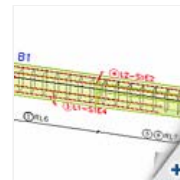


image 3

image 4

A great deal of work has been done to extend the modelling capabilities of Scia Engineer. Version 2008 enables you to effectively handle **general solids** that may be either imported from third-party programs or input directly in Scia Engineer. You are now able to freely modify the shape of the solids and, what is even more important, you can simply, i.e. automatically, convert general solids to Scia Engineer native entities: 1D members and 2D members (image 1).

Considerable attention has been paid to the module for the design of concrete members. In addition to the above-mentioned speed improvements, you can design reinforcement in 1D members of an arbitrary (i.e. varying) cross-section and even in 1D members with openings (image 2 and 3).

Also the next new feature will be probably used mainly for concrete structures, even though it is not limited to them. Imagine a slab composed of prefabricated beams. Version 2008 enables you to perform a **two-step detailed analysis** of such a slab. The first step represents the **analysis of the complete structure** with the slab considered to be a single (either isotropic or orthotropic) component.

In the second step, you can **easily export one beam of the slab into a separate Scia Engineer project** where you may evaluate in detail its behaviour without having to perform the laborious task of determining the load the beam is subjected to, because the load (together with some other parameters) is read from the results of the first analysis (image 4).

Another improvement concerns the document in Scia Engineer. **Images included in the document can now be exported to PDF as 3D images**. This means that the PDF file is all you need to make a breathtaking presentation of your project. Directly in the PDF file (using the standard Adobe Reader) you can rotate, zoom and move the structure or its detail and you can select the appropriate display style (from simple black-and-white illustration to transparent rendering) to get the best impression from the adjusted view (image 5).

And last, but not least, a completely new module is being presented. Scia Engineer is now capable of performing the **design and assessment of aluminium structures according to EN 1999-1-1** (image 6).



image 5



image 6

For a complete list of new features, please visit the [Scia Engineer - what's new page](#).



## About this Nemetschek Scia eNews

- We would like to encourage you to give us your current e-mail address, if the one we used for this message, would not be correct or if you want us to send it to another address.
- If you would like to **unsubscribe** from this eNews, just send us an e-mail with 'unsubscribe' as the subject followed by the e-mail address to be deleted.
- Please let us know if there are any topics in which you are interested. We would also like to hear any suggestions or ideas you may have on improving this eNews. [You can respond here ...](#)



Scia Group nv • Industrieweg 1007 B-3540 Herk-de-Stad • Tel: +32 13 55 17 75 • Fax: +32 13 55 41 75

Nemetschek Scia • Copyright © 2008 • [info@scia-online.com](mailto:info@scia-online.com)