



NL FR EN DE CZ

Home | Company | Solutions | References &amp; Markets | News &amp; Press | Support &amp; Downloads | Contact

February 2010

## Latest News &amp; Events

- Release days Scia Engineer 2010 France and Switzerland.
- Release days Scia Engineer 2010 Greece.
- Nemetschek Scia welcomes new Scia Engineer sales partner for Brazil: RCTASK
- Are you a student or professor? Download Scia Engineer for free today.



- 2010 is the year to switch to the Eurocodes. The BS will be redrawn in March 2010. Read Scia's explanatory note on the Eurocodes...
- Scia Engineer, certified conform to the Eurocode 3 (EN1993-1-1) by the French CTICM.

## New Software Updates

- Customers can download the latest service packs in our secured download section.
- Scia Engineer 2010.0.078
  - Scia Steel 2009 SP5
  - Allplan 2009-1-2
  - Allplan Precast 2008.2a2

- Get an automatic notify through RSS when a new Scia Engineer Service Pack is available.



## Training

- Free interactive eLearning.



- We offer group trainings for Scia Engineer, Scia Geotechnics, Allplan... Please consult our training agenda and register online...
- Interested in an individual customized training at your offices? Please contact Mrs. K. Verhille.
- Online training calendar 2010. Subscribe online...



- Any questions? Put it on the Scia Forum! Register...

## Software Gallery

Impressive Allplan projects

Dear eNews reader, here are the topics for this month...

- Nemetschek Scia Company News
- Shells of the Rolex Learning Center by BG Ingénieurs Conseils (CH)
- Scia Engineer: Freezing of pictures in the Document

## Nemetschek Scia Company News

Progress made in Fabrication Automation for precast and steel at Nemetschek Scia. Pre-announcement

Scia has a division dedicated to fabrication automation focusing on productivity improvements in the areas of production planning, routing, material resource planning & fabrication steering.

Although precast concrete and steel structures are processed differently in factories, many similarities exist with regard to how they manage and visualize the typical processes of fabrication.

In the first quarter of 2010, Scia – in cooperation with Nemetschek Engineering - is launching a software named PP Manager (Precast Part Mgr) for the concrete industry and a software named SP Manager (Steel Production Mgr) for steel fabrication and planning.

The technology common to these applications concerns the visualization of 3D and 4D data in an intelligent and intuitive way, giving direct access to catalogue data, project data and project information such as quantities. Virtual planning and controlling of production is a breakthrough technology, soon available to our clients.



## More web facilities for Scia Engineer

On 1st October 2009 Scia launched its student portal; in the last 3 months of 2009 Scia has seen 1,000 downloads and registrations by students of this special Scia Engineer version. In the near future Scia will release more e-services. Watch your e-mail.

top

## Shells of the Rolex Learning Center by BG Ingénieurs Conseils (CH)

## About BG Ingénieurs Conseils

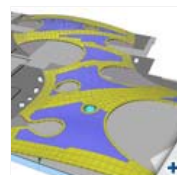
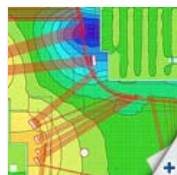
The BG group is a firm of consulting engineers operating at an international level and whose objective is to help their clients to build a sustainable living environment. United around strong corporate values, BG's staff represent a remarkable collective intelligence able to provide simple answers to the complex issues that arise from our planet's development.



It provides extensive services in the fields of infrastructure, environment as well as building and energy. BG's excellence is renowned in developing complex and challenging multidisciplinary projects, where its in-house competence in project management, risk assessment and optimum use of resources is a decisive factor.

## About the Project

With this project, BG Ingénieurs Conseils won the Nemetschek Engineering User Contest 2009 in category 5, CAE Special Projects. The Rolex Learning Centre is a new prestigious building of the Swiss Federal Institute of Technology in Lausanne (EPFL), designed by the Japanese architect office SANAA. The main characteristic of this 160m x 120m structure is that the floor of the building follows the convex shape of the two shells of the project. It is aesthetically really breathtaking.



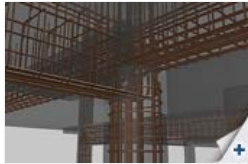
The main challenge of the project was the dimensioning of the extremely slender reinforced concrete shells. Their shape is very irregular, including many large patios.

Many complex non-linear calculations were carried out with Scia Engineer using a full 3D model: large displacements and 2nd order effects, critical instability modes, construction stages, prestressing and time effects, dynamics and seismic analysis, and, last but not least, stripping by jacks.

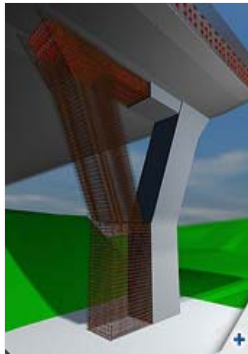
The Rolex learning Centre is a facility that blends into the landscape.

## A quote from the Jury:

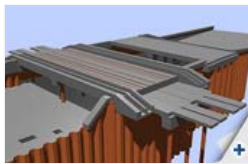
"An assembly of complex thin concrete shells providing a visually impressive functional arrangement requiring careful analysis at all stages during the construction. Scia Engineer was used for non-linear and dynamic analysis as well as to simulate the removal of formwork struts. The result is a facility that blends into the landscape."



Thanks to Ingénieurs BCT



Thanks to Tauw



Thanks to TCE & Witteveen + Bos

Read more about [this project](#), browse through our [online eBook](#) or [order your free copy](#) of the Nemetschek Engineering User Contest 2009 Book.

[top](#)

## Scia Engineer Tips & Tricks: Freezing of pictures in the Document

The compounding and regeneration of the Document in Scia Engineer can take up a lot of time, especially when dealing with large documents containing many pictures.

A new feature in Scia Engineer 2010.0 – the 'freezing of pictures' – can save a significant amount of time. This is done by (temporarily) breaking the intelligent link between the pictures and the model.

An extra property, 'frozen', has now been assigned to each picture in the Document.

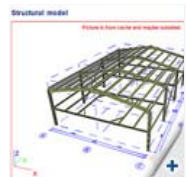
The activation of this property means that the picture is stored in the cache, so it will no longer be regenerated with the rest of the Document. This means that any modification of the model is no longer automatically transferred to the picture.

To avoid mistakes a warning is shown on top of every picture which might be outdated. When the Document is ready to be printed, the property 'frozen' can be once more deselected.

The intelligent link with the model is then restored, and after a clicking the 'Refresh Pictures' icon, all pictures will be updated.



Properties	
Picture (1)	
Name	Picture
Caption	Structural model
Visible	<input checked="" type="checkbox"/> yes
Print on page	<input type="checkbox"/>
Size definition	Percent of page
Percentage of page height	40
Fit	Fit to window
Rotate picture	<input type="checkbox"/>
3D rotate in 3D	<input type="checkbox"/>
Freeze	<input checked="" type="checkbox"/>
Edit picture	<a href="#">+</a>



[top](#)

- If you are not yet receiving the monthly Nemetschek Scia eNews, [you can subscribe here ...](#)

Scia Group nv - Industrieweg 1007 B-3540 Herk-de-Stad - Tel: +32 13 55 17 75 - Fax: +32 13 55 41 75

Nemetschek Scia - Copyright © 2010 - [info@scia-online.com](mailto:info@scia-online.com)