



NL FR EN DE CZ


Home | Company | Solutions | References &amp; Markets | News &amp; Press | Support &amp; Downloads | Contact

February 2012



## Latest News &amp; Events

- **Allplan Engineering 2012 Shows:**
  - 29/02/2012 in Wavre (BE)
  - 6/03/2012 in Arnhem (NL)
  - 8/03/2012 in Lokeren (BE)
- **Scia invites you to participate in a 4-days "Eurocodes in Practice Training"** (Dutch and French).
- Visit our **Webshop** and take advantage of our **special offers!**
- All you need to know on the Eurocodes... Visit [www.eurocodes-online.com](http://www.eurocodes-online.com)
- Are you a **student or professor?** Download **Scia Engineer for free...**

## Software Updates

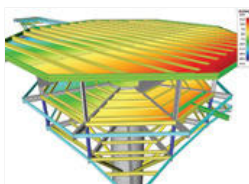
- Customers can download the latest **service packs** from our **secured download section**.
  - **Scia Engineer 2011.0.1102**
  - **Scia Steel 2011 SP2**
  - **Allplan 2011.1 HF6**
  - **Allplan Precast 2010.1-3**
- Get an **automatic notify** through RSS when a **new Scia Engineer Service Pack** is available. 

## Training &amp; Support

- **Free interactive eLearning.** 
- Group trainings for **Scia Engineer, M Series, Allplan...** Consult our **training agenda** and **register online...** 
- Interested in a customized training organised in your company? Please **contact Ms. Inge Wauters**.
- Any questions? Put it on the **Scia Forum! Register...**

## Software Gallery

- Oostdijkbank Radar Post **Helicopter Platform** - Nieuwpoort, Belgium. Thanks to Ingenieursbureau Oranjewoud B.V.

Welcome to the **February 2012** issue of the Nemetschek Scia eNews. This month we present you the following topics:

- **Tim Alexander Lüdke, New Board Member and CEO of Nemetschek AG**
- **Nemetschek Scia and the Eurocodes, together a step forward!**
- **User Contest 2011 - Winner of category 5: Tractebel Engineering - The Confluences Museum - Lyon, France**
- **Product Tip Allplan Engineering: SmartParts - Intelligent Modelling Functionality**

**Tim Alexander Lüdke, New Board Member and CEO of Nemetschek AG**

Tim Alexander Lüdke, born in 1968, has been Board Spokesman and CEO since November 2011. In this role, he is responsible for the strategic positioning and further internationalization of Nemetschek AG; managing directors in the operative units report to him directly.

Mr. Lüdke has almost twenty years of experience in and with technology companies. Over the past six years, and finally as partner and head of the Munich office of Russell Reynolds Associates, he has advised management and supervisory boards - predominantly of global IT and telecommunication companies - in the staffing and assessment of management roles.

Before this, he worked for ten years in management positions in Sales, most of the time as a sole managing director and CEO at different locations of General Electric's IT Solutions Business (previously CompuNet, now Computacenter) in Germany and Austria.



top

**Nemetschek Scia and the Eurocodes, together a step forward!**

The arrival of the Eurocodes is announced in the European Member States for a while now. These changes have an unprecedented impact on the construction sector in general. Although the deadline for the replacement of the National Codes by the Eurocodes was March 2010, more Member States are just now about to finish the transition phase.

Nemetschek Scia kept up its pace of innovation and implemented the larger part of the Eurocodes including numerous important National Annexes. A library of indispensable Nationally Determined Parameters is available in Scia Engineer allowing the user to design the structure according to the recommended country-specific methods and values of the Eurocode for the country of construction. For companies active on an international scale, the integration of nearly all of the National Annexes in one software platform is a clear cost- and technical benefit.

In the meanwhile, our team continues to remain ahead of each of the member states allowing all professionals to work in accordance with the latest update of their national standards. Furthermore, Nemetschek Scia aims to integrate the full range of Eurocodes, including timber and additional developments with regards to seismic design in the near future.

For more news on the latest implementation of EC and the National Annexes, visit our [Eurocode website](#) or have a look at this article.

top

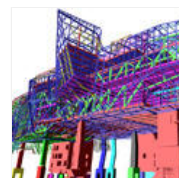
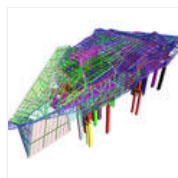
**User Contest 2011 - Winner of category 5: Tractebel Engineering - The Confluences Museum - Lyon, France****About Tractebel Engineering**

Tractebel Engineering France, subsidiary of Tractebel Engineering, is an engineering company dedicated to the execution of technical studies and monitoring of large works in the field of major water infrastructure, energy plants, transportation infrastructure and construction industry. The company is based in Gennevilliers (Paris), Lyon, Nice and Pierrelatte. More specifically, the infrastructure and special works department of TE France deals with constructions distinguishing themselves by their complexity and/or characteristic superstructure (architectural structures, innovative shapes and behaviour, new materials, etc.).

**TRACTEBEL Engineering**  
GDF SUEZ

**About the project**

The structure in question consists of 3 parts: the base, the cloud and the crystal. The base is made of concrete in one to two levels. The cloud represents the largest part of the building. It is a 7-storey steel structure (main structure), "capped" with a steel shell which sits on the base with only 3 concrete piers and 12 enormous columns, positioned independently on the base. The horizontal reactions of the structure are transferred exclusively by these columns and piers.



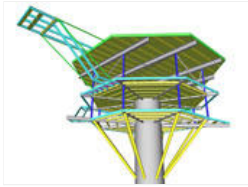
The crystal is made of fully glazed steel, supported partly by the base and partly by the cloud. It consists of a secondary structure resting, through connecting posts, on the primary metal structure. The links between the cloud and the crystal allow for slippage between the two parts.

The base is founded on piles and micro piles and the piers and columns on barrette piles.

Quote of the Jury: "This very original structure with an extremely complicated shape has been technically very challenging as no element has the same geometry: a concrete foundation with huge columns support the steel cloud and the crystal. Different materials, together with dynamic calculations and difficult foundation conditions, made this project very demanding. The perfect presentation gave the finishing touch."

- **Play YouTube Movie**
- **Download pdf: "Tractebel Engineering - The Confluences Museum - Lyon, France"**

top



#### Free Tryouts

► Via our webshop we offer the following **Free Tryouts**...

- [Scia Desk](#)
- [Frilo Statics](#)

Follow us:

## Product Tip Allplan Engineering: SmartParts - Intelligent Modelling Functionality

**Allplan 2012** provides a new, powerful 3D modelling functionality with independent, parametric Allplan CAD objects. As a result of the CAD system-independent business logic, they behave intelligently and support object changes, variations, freeform solids and the merging of flexible, prefabricated components easily and in real time. Geometrically complex structures can be modeled far more easily, as well as subsequently changed. The easy-to-learn programming language SmartPart Script also means that individual and parametric 2D/3D objects can be created. At the same time, it is possible to import other compatible script languages and integrate Google SketchUp files.

As an example of what's possible with a **SmartPart** of a complex 3D object, we made a SmartPart from the type of bridge pillar that is used in the project "Fly-Over – Kerensheide" (User Contest 2011 project from Movares, built by contractor Heijmans).



► [Play Youtube Movie](#)

In this [movie clip](#) you will get a first impression of what can be done with such a SmartPart.

**Like to know more? Visit one of our Allplan Engineering 2012 Shows!**

- [29/02/2012 in Wavre \(BE\)](#)
- [6/03/2012 in Arnhem \(NL\)](#)
- [8/03/2012 in Lokeren \(BE\)](#)

[top](#)

If you are not yet receiving the monthly Nemetschek Scia eNews, [you can subscribe here ...](#)

Nemetschek Scia nv - Industrieweg 1007 B-3540 Herk-de-Stad - Tel: +32 13 55 17 75 - Fax: +32 13 55 41 75

Nemetschek Scia - Copyright © 2012 - [info@scia-online.com](mailto:info@scia-online.com)