

NEWS

- ▶ **SCIA User Contest 2007:**
The starting shot has been fired!
- ▶ Fantastic success of the SCIA - CADS **roadshow in India** [more](#)
- ▶ **Stay up-to-date** and use our most recent and powerful versions.
SCIA•ESA PT 5.2.329 and **ESA-Prima Win 3.80.034** are now available. Visit our [secured download-section](#) for customers.
- ▶ Customers can help each other. Join us making the **SCIA Forum** a real success!
[Register today](#)

EVENTS

- ▶ **'The three pillars of the construction world'** - SCIA Conference Day on 8th June 2006 in Grimbergen (B) ... [subscribe](#)
- ▶ SCIA presents, "**new release SCIA•ESA PT 2006**" in Oosterbeek (NL) on 13th June 2006... [subscribe](#)
- ▶ SCIA organizes a 'Free initiation day, **Allplan Engineering**' on 14th June 2006 in Gent (B) ... [subscribe](#)
- ▶ Also this year, SCIA will take part in **'the Constructors' day'** on 22nd June 2006 ... [more](#)

TRAINING

- ▶ SCIA organizes a basic course '**SCIA•ESA PT**' in Arnhem (NL) on 19h, 20th, 21st June 2006.
[Calendar & Subscription](#) ...
- ▶ Basic course: '**Allplan Engineering**' in Herk-de-Stad (B) on 20th and 28th June 2006.
[Calendar & Subscription](#) ...

JOBS

- ▶ SCIA is an **innovative company** in full expansion. We are constantly searching for new result-oriented co-workers looking for a **challenging career**. If interested, please fill out our [Online Application Form](#), motivating your interest.

SCIA also highly encourages [spontaneous applications](#).

GALLERY

- ▶ **Wooden observation tower** -



June 2006

[<printable version>](#)

Dear SCIA eNews reader,

We are almost halfway through 2006 and before the summer interlude we would like to propose the following topics:

- » **Corporate News:** Be the best in Planning, Information Management and Innovation
- » **Product News:** Collaboration Bau-Software-Haus and SCIA
- » **The Market:** Super cities in the spotlight during the next 'Biennale of Architecture' in Venice
- » **Customer's Project:** Liquefied Natural Gas (LNG) Plant on the island of Melkøya in Norway
- » **Tips & Tricks:** Rotation Angle in SCIA•ESA PT

Next September you'll hear from us again with the latest SCIA News items!
Enjoy the summer, the sun, the birds, the bees and of course this eNews ...

Be the best in Planning, Information Management and Innovation

SCIA is seeing a sharp increase of sales of its software during the first half of 2006 (> 25%). Questioning clients and analysing the market response to the SCIA products, it is apparent that the success is due to **key factors**:

- the construction market, and the engineering design community in particular, is giving priority to professional technical information. **Engineering work is multi-tasking, and therefore is in need of 3D models, detailed analysis and design simulations.**
- the construction industry is searching new tools to optimise and speed up the process "from design to construction"; **an integrated software suite** responds the best to process changes.
- new construction methods, new materials, new structural concepts, safety regulations and building codes, they all require a solid engineering design with **state-of-the-art innovative software.**
- Worldwide investments in construction projects are upward, especially concerning energy and infrastructure; with fewer engineers there is more work, which requires **adapted software.**

With **over 100 conferences, seminars, road shows, free initiation days** and other events planned for this year, SCIA is addressing its future clients. You are kindly invited to join these activities!
Watch our regional and international [websites](#)!

[▲ top](#)

Collaboration Bau-Software-Haus and SCIA

Recently **SCIA** started collaboration with the German company **Bau-Software-Haus GmbH**. The latest release of their **BauText TechEditor** is now fully compatible with **SCIA•ESA PT**.

Structural engineers are often struggling when drawing up technical documents. **BauText** comes in very handy, as it is a unique solution offering complete support to the engineer when **making technical calculation reports**. Besides the usual functions of word processing, it gives you the possibility to easily add or insert comments, calculations and other structural analyses data, into **SCIA•ESA PT**'s output document. ([Example](#))

The BauText TechEditor has been developed particularly for the design of **load-bearing structures** and is able to calculate formulas and tables automatically. Frequently repeated structural verifications, calculations and text modules are saved as templates and retrieved as and when required. When **an input value is changed, BauText immediately recalculates all dependent values**. Even looking up material, component or cross section values from database tables is done automatically. This unique functionality makes BauText an interesting supplement to **SCIA•ESA PT**.

Working in tandem, the complete structural analysis can be put in one digital document. The data exchange is realised by **t2w** (transpose to worksheet). This new technology allows the output of additional results into the work document. The result is a clean and continuous document with uniform page headers and footers, page numbers, table of contents and much more.

The TechEditor comes with an extensive library of **hundreds of templates** providing solutions to most day-to-day tasks.

For more details and to download a **free trial** version with **more than 100 templates**, please visit www.bautext.com/english.

[▲ top](#)

Super cities in the spotlight during the next 'Biennale of Architecture' in Venice



From September 10th to November 19th 2006, the **10th international Biennale of architecture** in Venice (Italy) will reflect on the topic: "City, architecture and society". This reflexion will be based on the example of sixteen super cities throughout the world.



BauText®

t2w



Output of **SCIA•ESA PT** inside the **TechEditor Bautext**



"We decided to dedicate the tenth edition of the 'Biennale of Architecture' to the topic 'large cities as an evolutionary phenomenon' ", says **Davide Croff, president of the Foundation 'Biennale of Venice'**.

"The city is the principal place where 'architecture' can be exercised and it is also the place where living-together is measured, where the strong bond which exists between architecture and society is measured", he claims before recalling that "one of the major problems of today and tomorrow is the increase in the population and urban progress. In 2005, for the first time, the number of inhabitants residing in cities exceeded the 50%".

Entitled "City, architecture and society", the exposure will take place in the old rope factories of the 'Arsenal'. It will present, by the means of photographs, new films and 3D graphical representations, the urban experiments of sixteen super cities: Shanghai, Bombay and Tokyo in Asia; Caracas, Mexico City, Bogotá, Sao Paulo, Los Angeles and New York in North and South America; Johannesburg, Cairo and Istanbul in Africa and the Mediterranean; London, Barcelona, Berlin and Milan in Europe.

The exposition will not only give information on the social, economic and cultural transformations of these cities, it will also show the new architectural and urban projects which will determine the life style of the townsmen (resident, work, leisure, mobility). The Biennale will also organize one of its exposures outside of Venice, namely in Palermo (Sicily), on the topic 'harbour cities'.



Liquefied Natural Gas (LNG) Plant on the island of Melkøya in Norway

Project: Liquefied Natural Gas (LNG) Plant on the island of Melkøya in Norway

Principal: Statoil

Transport study and detail studied: SCIA's customer **SBE**



About SBE

For more than 15 years, the Belgian company **SBE** profiles itself as architectural designer with, notwithstanding the traditional stability tasks, a specific emphasis on water and port constructions, geotechnical problems, steel structures and foundation techniques. SBE works with some 35 employees, mainly project engineers, study engineers and designers.

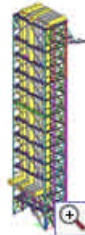
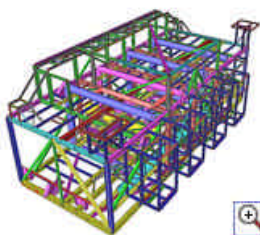
The challenge

In 1984, researchers of the Norwegian oil and gas producer Statoil discovered a **natural gas reserve** of about **190 billion cubic meter** in the Snøhvit area, right in the middle of the Hammerfest basin. The LNG also appeared to contain small quantities of condensates or light oil; estimated at 17,9 million cubic meters. Really an enormous strike; however nobody was very keen on starting the exploitation. The technical challenges were, to put it mildly, overwhelming. For a long time it even seemed to be a 'mission impossible', but in the meantime the last phase of the project, started up in 2002 and estimated at **5,75 billion euros**, has been finished off.



The Project

The construction of a new LNG plant is situated on the island of Melkøya, near Hammerfest, Norway. The steel structures were, among others, produced by the company **Iemants (B)** and assembled on their site in Hoboken. The installations were almost completely finished on site, that is with cladding, piping, electricity supplies, wiring, etc.



Subsequently, the different parts were positioned on a ship and shipped off to Norway. Here they were fitted in the whole exploitation site. A very important feature when using this way of fabrication is the handling of the structures (lifting, shifting, moving ...) and the sea transport (with horizontal acceleration forces). SBE did all the workshop drawings and made transport and detail studies using SCIA's ESA software. In the ESA-environment, models were made of the modules, including the pipeline part. These models were then subjected to a transport calculation, at which they were attached to the ship and at which they were exposed to waves. These loads were translated in horizontal components of the dead load (as in earthquake calculations).

Tips & Tricks: Rotation Angle in SCIA•ESA PT

During the modelling of a structure, in many cases it is required to rotate the structure using a specified **rotation angle**. SCIA•ESA PT allows the user to input this angle and thus easily obtain the required rotation.

After selecting the structure and starting the **Rotate** command, a new button

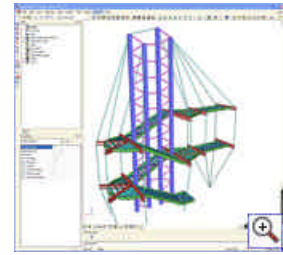
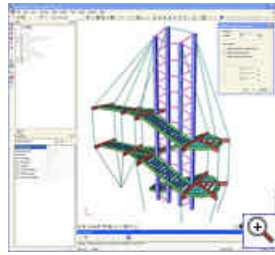
appears in the **Command Line: Enter the Angle of Rotation**



Using this option, the rotation angle can be entered and the axis around which the rotation is taken can be specified. When for example a **custom axis vector** is chosen, a vector of **0; 0; 1** can be entered to specify a rotation around the global **Z-axis**. It is clear that a random vector can be entered to virtually obtain any rotation.



When the angle is entered, the only thing left is choosing the **centre of rotation** and automatically the selected structure is rotated.



▲ top

About this SCIA eNews

- » We would like to encourage you to give us your current e-mail address, if the one we used for this message, would not be correct or if you want us to send it to another address.
- » If you would like to **unsubscribe** from this **eNews**, just send us an e-mail with '**unsubscribe**' as the subject followed by the e-mail address to be deleted.
- » Please let us know if there are any topics in which you are interested. We would also like to hear any suggestions or ideas you may have on improving this eNews. **You can respond here...**

▲ top

SCIA Group NV - Industrieweg 1007 - B-3540 Herk-de-Stad
Tel: +32 (13) 55.17.75 - Fax: +32 (13) 55.41.75

Copyright © 2006 - info@scia-online.com
SCIA International is member of the
Nemetschek Group

