



NEWS

▶ Customers can help each other. Join us making the **SCIA Forum** a real success!  
[Register today](#)

▶ SCIA values **your feedback**. Please use [this form](#) for sending us your remarks, ideas and suggestions which help us improve our services.

▶ **New Service Release:** SCIA.ESA PT 5.2.285 and ESA-Prima Win 3.70.285 available on our [secured download-section](#)

EVENTS

▶ On March 23rd, the **'Betonvereniging'** organises in Meervaart, Amsterdam (NL), a **study afternoon** in collaboration with **STUMICO**. The theme is "3D/4D CAD in practice: from Model to Construction" ... [more](#)

TRAINING

▶ Basic course: **'SCIA.ESA PT'** in Arnhem (NL) on 22nd, 23rd and 24th March 2006.  
[Calendar & Subscription ...](#)

▶ SCIA organizes a course **'Allplan Engineering'** in Herk-de-Stad (B) on 28th March and 4th April 2006.  
[Calendar & Subscription ...](#)

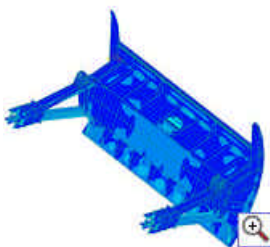
JOBS

▶ SCIA is an **innovative company** in full expansion. We are constantly searching for new result-oriented co-workers looking for a **challenging career**. If interested, please fill out our [Online Application Form](#), motivating your interest.

SCIA also highly encourages [spontaneous applications](#).

GALLERY

▶ **Shutter 'Balgerhoeke' on the river 'Leie' (B):** Thanks to SCIA Customer [SBE nv](#)



**Dear SCIA eNews reader,**

In this March edition of the SCIA eNews we have some very important news. **Since February 14th, SCIA is a member of the large Nemetschek group.**

SCIA, together with Nemetschek, are the No. 1 player in the European market for engineering software solutions. This close collaboration will generate important growth with many perspectives and synergies. For all details, please read the corporate news in the following first section.

Have a very nice reading!

Here are the items for this month:

- » [Corporate News: SCIA reinforces the Nemetschek Engineering Software business internationally](#)
- » [Product News: KOMO product certificate for SCIA.ESA PT and ESA-Prima Win](#)
- » [The Market: 2014 OLYMPICS, very large modernisations of Russian candidate city](#)
- » [Customer's Project: 'Scheepmakerstoren' in Rotterdam \(NL\)](#)
- » [Tips & Tricks: The SCIA.ESA PT Animation Window](#)

**New majority shareholder for SCIA International - SCIA reinforces the Nemetschek Engineering Software business internationally**

Herk-de-Stad, 15th Feb. 2006



**Nemetschek AG (Munich)** has reached an agreement with a group of shareholders of **SCIA**, among them **LMS International NV** and **GIMV NV**, holding the majority in the company, to take over their shares in SCIA. A shareholders' agreement has been signed with the management and employees, keeping minority shares in SCIA.

Nemetschek is a **worldwide leader in software solutions for the construction industry**. For almost four decades, Nemetschek has been developing user-friendly and seamlessly integrated applications for customers in the fields of **building design, construction and management**.

**Nemetschek** has more than **700 employees**, of which about 400 work in Germany, 150 in Western Europe, 100 in Eastern Europe and about 80 in the U.S. "**Global sourcing**" and "**global selling**" are well-established facts of everyday life in Nemetschek's corporate culture. The company's sales network includes **400 sales partners** in more than **140 countries** with about **160,000 customers**. Nemetschek has a consolidated turnover of nearly **100 million €** with an operational **profit of more than 13 million € in 2005**. Nemetschek is listed at the stock market in Frankfurt (Germany).



**SCIA** has **90 employees** in W. & E. Europe, a turnover of **7,3 million €** with a **solid profit in 2005** and a continuous growth since over 5 years. SCIA has an international network of branches and distribution **partners in 16 countries**. Its products have been translated in 10 different languages and over **8000 licenses** have been sold to more than **5000 clients** in **50 countries**.

SCIA will play a leading role in the international expansion of the engineering software within Nemetschek, originally the core business of Nemetschek. **Together with other Nemetschek divisions and companies (Friedrich & Lochner, Glaser) SCIA and Nemetschek take the absolute leading position in constructional engineering software in Europe.**

The company SCIA is at the doorstep of the fourth step in its 32 years existence; after pioneering came a fast growth, followed by consolidation and now finally being part of an international group.

For more details we refer to the [Q & A section](#).

We will be glad to answer your questions by mail or phone.

J.P. Rammant, CEO

**KOMO product certificate for SCIA.ESA PT and ESA-Prima Win**

During the 'Betondag' (Concrete day) on 17th November 2005, the **KOMO product certificate** for **'Calculation software for concrete constructions'** was presented to SCIA. The modules esacd.01.03 and esas.18 of **SCIA.ESA PT** as well as the PRC.71.03 and PRS.82 of **ESA-Prima Win** received the KOMO product certificate.

**Value**

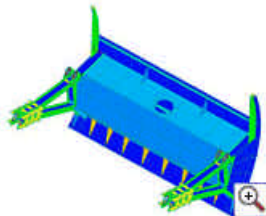
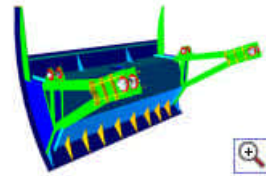
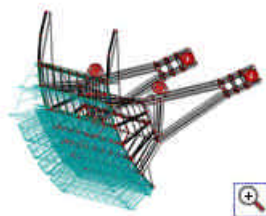
A 'KOMO product certificate' is a document in which is explained by an independent institution that the product satisfies the technical specifications as incorporated in the certificate. It is also required that the quality system of the supplier must be such, that the product continuously keeps on meeting the requirements. The value of this product certificate is that it gives clarity to the user of the product. The user no longer has to check if the product satisfies all technical specifications.

**Test sets**

The correct functioning of the software is checked by comparing the results with test sets of which input and results are known. At this moment test sets are available for beams of



reinforced concrete spanned in one direction and concrete piles. In the future the available test sets will be extended to other fields of application of concrete constructions.



## 2014 OLYMPICS: very large modernisations of Russian candidate city



As it was eliminated during the first round of the 'election of the host city' for the Olympics of 2012, **Russia** decided to have again a try for an olympic candidature. Recently, the Russian government granted the amount of **11,7 billion dollars** to develop **Sotchi** (a balneal resort at the edge of the Black Sea), a candidate city for the **Olympic Winter Games of 2014**.



The Russian Prime Minister, Mikhail Fradkov, has approved that the 'Federal Programme for the Development of Sotchi 2006-2014' is going to "aim at developing Sotchi as a **holiday resort of international class** and see to the construction, from 2006 on, of all necessary infrastructure to accommodate the Winter Olympics under the best possible conditions". The budget of the program is distributed between public funds, amounting to 60% (6,8 billion dollars), and 40% for private companies (5,2 billion dollars). It is spread out over the next eight years. The implementation of the program "will give an impulse to the local economy and will support the creations of jobs", the official statement adds. In 2007, the International Olympic Committee (IOC) is going to choose the host city of the Winter games of 2014.



## PROMOTIONS

SCIA recently decided to hand over the Mathcad business to Mathsoft. Please take advantage of our **End of Stock Promotions** and **Buy online and get up to 50 % discount...**



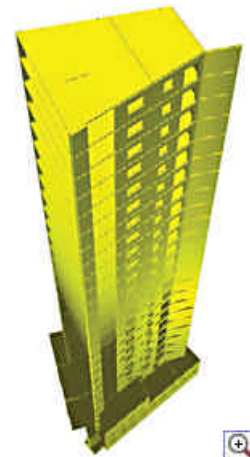
## Customer's Project: 'Scheepmakerstoren' in Rotterdam (NL)

**Project:** 'Scheepmakerstoren', Rotterdam  
**Constructor and SCIA customer:** D3BN  
**Contractor:** Midreth bv  
**Architect:** SOL Design + Development bv

D3BN is a specialised engineering office, active in consultancy with regard to new housing projects, large-scale renovations and infrastructure activities. It uses the experience of earlier more complex projects in apparent more simple assignments in order to obtain the most efficient solutions. D3BN's knowledge of the newest technologies offers more possibilities for design and utilization of spaces.



The '**Scheepmakerstoren**' is a block of flats in the centre of Rotterdam. In this building, a total of **24 storeys** are reserved for private houses. On the 25th storey is located a **sauna** with changing rooms and on the 26th storey a **swimming pool**. In the three storey deep basement is room for about **50 cars**. The cars are transported in and out of the basement by means of an **automated parking system**. On the ground floor and on the first floor is room for part storage space for the residents, part shops. At the back side of the building comes a steel construction, in which the stairs and elevators are located.



The most remarkable thing about this building is the **high slenderness** of the structure. With a height of **88m**, the foundation of the building is about **20 x 20m<sup>2</sup>**. Up to the 26th storey ( with a height of 74,5 m) the building is realised in **concrete**, above it, a **steel roof** construction rises to the sky. The roof construction is made out of 'flaps', they visually end the building and improve the wind impact around the pool (on storey 26).

The building has a foundation of vibro-combination piles of  $\varnothing 508/620$ . The lift pit has a foundation of steel casings, that is incorporated in the sheetpile wall. The sheetpile walls are permanent and form both the basement walls as the foundation for the low-rise building.

The concrete construction with the real loads has been introduced in a 3D model in the computer. From this model - **Finite element module of ESA-Prima Win** - follow the pile reactions, the deformations and the section forces in the concrete construction.



More info on [www.scheepmakerstoren.nl](http://www.scheepmakerstoren.nl)

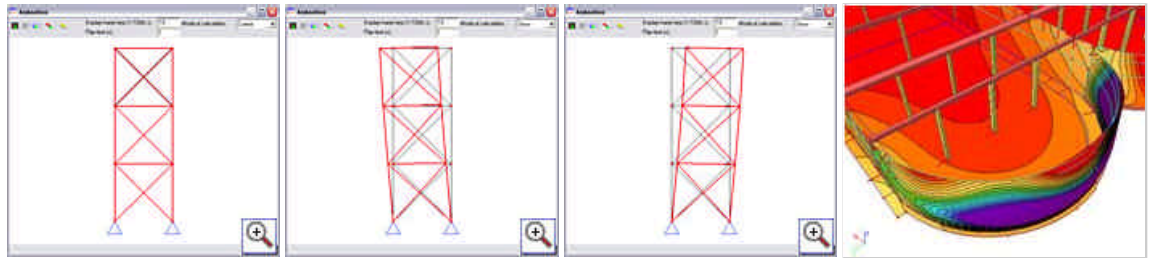
## Tips & Tricks: The SCIA.ESA PT Animation Window

When performing calculations, it is sometimes very useful to see how the structure reaches its **final deformation starting from the initial geometry**. This gives the engineer more insight into what actually happens with the structure.

When looking at the deformed structure in the Results menu, the **Animation Window** can be activated



through View >  New animation window



This tool is especially useful when performing a **dynamic calculation**. The Animation Window can, for example, show the vibration of the structure caused by a seismic load case.

[▲ top](#)

#### About this SCIA eNews

- » We would like to encourage you to give us your current e-mail address, if the one we used for this message, would not be correct or if you want us to send it to another address.
- » If you would like to **unsubscribe** from this eNews, just send us an e-mail with '**unsubscribe**' as the subject followed by the e-mail address to be deleted.
- » Please let us know if there are any topics in which you are interested. We would also like to hear any suggestions or ideas you may have on improving this eNews. **You can respond here...**

[▲ top](#)

SCIA Group NV - Industrieweg 1007 - B-3540 Herk-de-Stad  
Tel: +32 (13) 55.17.75 - Fax: +32 (13) 55.41.75

Copyright © 2006 SCIA Group nv  
[info@scia-online.com](mailto:info@scia-online.com)