



eNews

NL FR EN DE CZ

March 2007

NEWS

[<printable version>](#)

Nemetschek acquired a majority in Graphisoft, the makers of Archicad, and launched a public takeover bid for the remaining shares. [more ...](#)

After the success of the last edition, SCIA and Nemetschek will organise this spring a **'Business Training Centre'** for our business partners in **Germany, Austria and Switzerland**.

Next **19th April**, the judging committee will gather for the **evaluation of the projects** of the User Contest 2007.

EVENTS

On the **21st of March**, CADS and SCIA are launching **SCIA•ESA PT 2007 in Belfast** (N-Ireland).

Please note the following 4-day event in your agenda: **'Robots in Profile'**, an organisation of Partners-in -Steel International and Kaltenbach. [more ...](#)

UPDATES

Recently the following new software version has been released:

- » **SCIA•ESA PT 2007.0.128**
- » **ESA-Prima Win 3.90.125**

Customers can download these in our [free download section](#).

TRAINING

In the following months a lot of **trainings** are organised in our offices of **Herk-de-Stad** and **Arnhem** with, among others, the following topics:

SCIA•ESA PT

- » Basis course
- » Tips & Tricks
- » Concrete
- » Non-linear calculation
- ...

MSheet

- » Basis course (23/03/2007)

Allplan Architecture

- » Basis course (24 & 25 April 2007)

Here you find [all training dates with a programme overview](#) and you can register online.

JOBS

Dear eNews reader,

For about a year now SCIA is a part of the large Nemetschek Group. But also the SCIA Group is growing noticeably. One of the most recent achievements is the foundation of the spin-off company **Online Projects**. This company offers with **think project!** an internet-based solution for efficient information and project management.

We also launch a few **new SCIA•ESA PT modules** on the market: "Asymmetrical strand patterns", "Check on prestressed bars", "Code check for canal plates" and others. The last one will already be treated in this eNews.

We wish you a lot of reading pleasure!

- » **Corporate News:** "Online Projects NV", SCIA launches a spin-off company together with baulogis GmbH
- » **Product News:** Check of Hollow Core Slabs in SCIA•ESA PT
- » **The Market:** World production of raw steel on its highest level
- » **Customer's Project:** Birdhouse 'Wetland' in the Zoo of Antwerp (B)
- » **Tips & Tricks:** Modelling of eaves and railings in Allplan

"Online Projects NV", SCIA launches a spin-off company together with baulogis GmbH

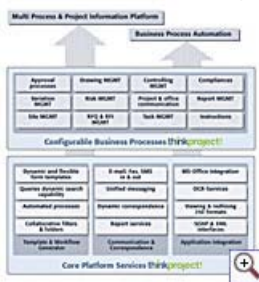
In the year 2000 SCIA launched a web-based project management software, named Smart-Project.

thinkproject!

Several users have adopted this Internet based tool, to improve the communication and distribution of project documents & drawings. As an example U.C.B., the Belgian pharmaceutical & chemical group, has extensively used Smart-Project for its construction projects worldwide; U.C.B. reported impressive cost reduction figures, over 15%, by improving the management of all building documents between the project partners.



SCIA is now launching a follow-up product, named **think project!**, provided with the latest software technology and with many more functionalities. Over **50,000 users** in **20 countries** are already using this Internet-based solution in more than **1,000 projects**.



The author of **think project!** is joining SCIA at investing in a new company, named **"Online Projects"** to market the successful software in BeNeLux. **think project!** has proven to be outstanding for workflow management of data & documents. **Among the references are:** Hochtief AG, Max Bögl, Ways & Freitag, Züblin, Audi, BMW, Robert Bosch.

At the same time a **strategic partnership** has been agreed between **Nemetschek AG**, the reference shareholder of SCIA, and **baulogis gmbH** to develop **jointly collaborative solutions for construction projects**. Contractors, planners, investors will all have access at any time and anywhere to the latest documents as they arise during the life cycle of a construction, from the planning stages to construction and management.

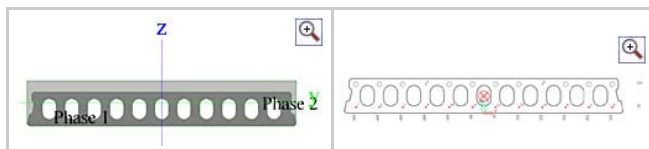
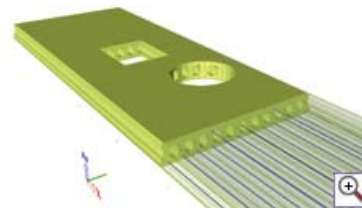
[▲ top](#)

Check of Hollow Core Slabs in SCIA•ESA PT

In conjunction with SCIA•ODA, the user has a very powerful tool, which calculates and checks hollow core slabs with or without openings in a very fast and user-friendly way.

With 'Check of Hollow Core Slabs' the user can easily and quickly perform checks according EN 1168, in addition to the normal EN 1992-1-1. The various checks include splitting, punching and shear/torsion interaction. Using the general cross-section module, the 'main user' is able to define his customized set of hollow core cross-sections.

This module was developed in collaboration with engineers with expertise in precast concrete, thus resulting in an effective approach to every day engineering problems.



Using the "main user" philosophy, the lead engineer defines a template calculation/document of a hollow core slab calculation in SCIA•ESA PT, which means that the "common users" can run this template in SCIA•ODA or

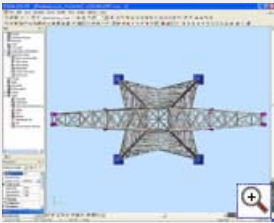
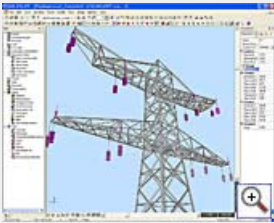
SCIA's customers are invited to add their **job vacancies free of charge** in our '**SCIA Jobs Network**'.



Please also check **SCIA's Job Openings**. Good luck!

GALLERY

Examples of Power Pylons in **SCIA•ESA PT 2007**



SCIA•ESA PT. They only need to enter the parameters defined by the 'main user' thus reducing the possibility of mistakes and in the meantime reduce the cost of repetitive engineering considerably.

▲ top

World production of raw steel on its highest level

According to figures published by the **International Iron and Steel Institute (IISI)**, the world production of raw steel knew a new record in 2006, that is with a growth of 8,8% in 2006 compared to 2005 and a production up to 1,239 billion tons.

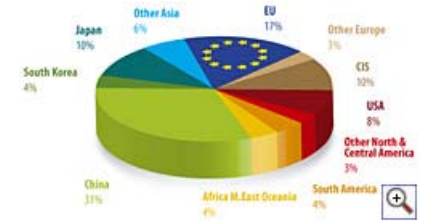


China, the engine of the sector, saw its production of steel make a leap of 17,7% between 2005 and 2006 that is up to 418,8 million tons. Compared with the level of 1996 (101,2 million tons), this represents a progression of 414% in ten years. On the whole, the Asian production represents nearly 54% of the world production, against 38,4% ten years ago.

Not only China knows a spectacular development, but also its neighbours like **Japan and Korea, or India** whose consumption knows an average growth rate of approximately 7% per year. Concerning export, **China became for the first time last year since nearly 20 years, the main exporter of steel** with customers like: the remainder of China, the United States, but also countries of the south of Europe like Italy and Spain.

In addition to the Asian countries, **Russia also benefited from the boom in demand**, posting the second place in rise of production among the first ten countries.

World Crude Steel Production Geographical Breakdown 2005



▲ top

Project: Birdhouse 'Wetland' in the Zoo of Antwerp (B)

Engineering: **Staaladviesburo - SAB (B)**

Type: Steel construction
Location: Zoo of Antwerp
Surface: 676 m²



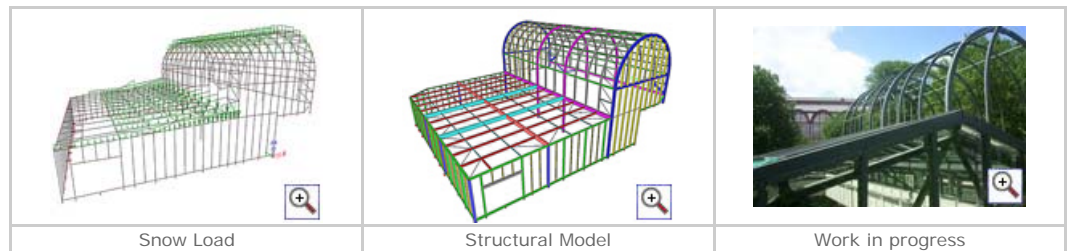
About Staaladviesburo - SAB

Staaladviesburo is a consulting engineering office specialised in giving consult and support with regard to industrial steel constructions. They focus in particular on smaller companies without an own study office as well as on special constructions, modernisations and renovations. SAB exists since 2000, the company arose - after 40 years of experience - from the engineering office for public works TKB - ATENCO and the BSC British Steel Corporation.

About the project

The 'walk-trough' birdhouse has a surface of 26 x 26 m (676 m²) and a maximum altitude of 15 m.

The column feet are considered as articulations and are alternatively placed on an existing concrete structure or on traditional soles. Stability is effected in longitudinal direction by 4 head portals and 9 in-between arched portals (arch with three articulations). In longitudinal direction stability is foreseen by a traditional roof connection. The low façades around it are realised as quarters.



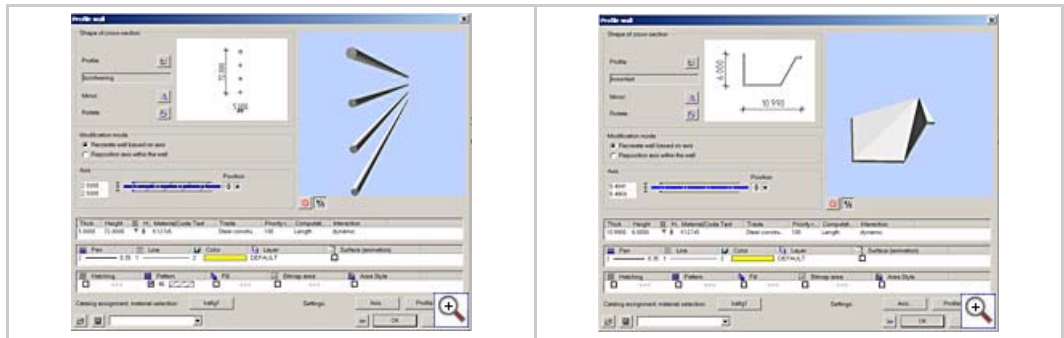
The whole construction is covered with a synthetic net (temporary considering the cost). Later this cage will get another function with a steel net, for the housing of birds of prey. Because both the buildings of the Zoo and the landscape are classified, openings had to be foreseen for the tree passages. At a later stage it is possible to clad both the façades and the roof with translucent plates. In that case both wind and snow must be taken into consideration.

The steel structure is entirely made of RHS tubular profiles AE355D. The protection of steel is realised with a fungicidal coating, high solid of ± 300µ. Bolt connections are provide with shell nuts (where necessary) in stainless steel. Also the system 'flow-drill' has been applied for the unilateral connections of the mutual tubes.

▲ top

Tips & Tricks: Modelling of eaves and railings in Allplan

With the function '**Profile wall**' it's possible to draw walls with a complex section, but this function can also be used to model cornices and parapets.



First, you have to use the 2D functions to draw the section of the cornice or parapet. After that you have to convert the section to a symbol.

By using the function 'Profile wall' you will now be able to draw cornices and parapets directly in 3D.

[Archive Tips & Tricks](#)



[▲ top](#)

About this SCIA eNews

- » We would like to encourage you to give us your current e-mail address, if the one we used for this message, would not be correct or if you want us to send it to another address.
- » If you would like to **unsubscribe** from this eNews, just send us an e-mail with 'unsubscribe' as the subject followed by the e-mail address to be deleted.
- » Please let us know if there are any topics in which you are interested. We would also like to hear any suggestions or ideas you may have on improving this eNews. **You can respond here...**

[▲ top](#)

SCIA Group nv - Industrieweg 1007 - B-3540 Herk-de-Stad
Tel: +32 13 55 17 75 - Fax: +32 13 55 41 75

Copyright © 2007 - info@scia-online.com
SCIA International is member of the

