

NL FR EN DE CZ

[Home](#) | [Company](#) | [Solutions](#) | [References & Markets](#) | [News & Press](#) | [Support & Downloads](#) | [Contact](#)

Latest News

- ▶ Scia has passed the second and last test on IFC 2x3 certification with its flagship product SCIA • ESA PT v. 2008. [more...](#)
- ▶ Charles Wilby has joined Scia as the regional head of sales international. [more...](#)
- ▶ Nemetschek Scia presents the new **Scia Engineer 2008**. We kindly invite you to read our brochure and leaflet. [more...](#)
- ▶ We are looking for engineers with a background in construction and structural engineering wishing to pursue a career as **support or sales engineers** based in the UAE and other locations throughout Asia. Please contact [Charles Wilby](#) for more details.

Events

- ▶ In June we will be running a series of seminars in the UAE including a seminar hosted by the UAE Society of Engineers on 11 June 2008 in Dubai. Please contact [Charles Wilby](#) for more details.
- ▶ On the 22nd and 29th May, Nemetschek Scia organizes **releasedays "Scia Engineer"** in the BenNeLux. Note it down.

Software update

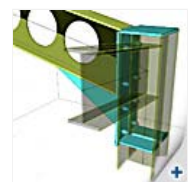
- ▶ Customers can download the following **service packs** in our [download section](#).
 - Scia Engineer 2008.0.019
 - ESA-Prima Win 3.100.170

Training

- ▶ Scia Engineer
 - Basis course
 - Tips & Tricks
 - Dynamics
 - Non-linear calculation
- ▶ Allplan BIM 2008
 - Basis course (19th & 20th June 2008) (26th & 27th June 2008)
- ▶ [Online training calendar 2008 & online registrations ...](#)

Software Gallery

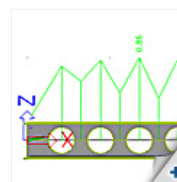
- ▶ Read our new **Scia Engineer brochure**. Here are a few screen shots



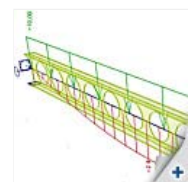
3D structure cellular beams



Library for cellular beams



Cellular beam unity check



Deformations on a cellular beam

Dear eNews reader,

This month we already send out our 40th edition! Exactly four years ago we launched our very first eNews. Ideas, tips, suggestions and/or remarks to improve the e-newsletter are always welcome. In this May-edition we have news from all over the world; from a water treatment plant in Eupen (B) to a dragon-shaped terminal in Peking. We wish you a lot of reading pleasure!

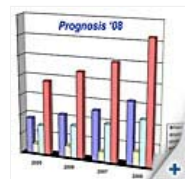
In this edition we have chosen the following topics for you:

- **Corporate News: Nemetschek Scia adapts its company structure to its growth**
- **Product News: Scia Engineer – Cellular beams 'ENV 1993-1-1: 1992/A2'**
- **Market News: A gigantic dragon awaits the world at the Beijing airport**
- **Customer Project: Water treatment plant in Eupen (B)**
- **Tips & Tricks: Parameters in Scia Engineer**

Corporate News: Nemetschek Scia adapts its company structure to its growth

The growth in revenue and people of recent years brings the necessity to align the organization better with the company strategy. This strategy is based on international growth by entering specific market segments in different regions internationally.

The sales organization is set up in regional divisions for **North Europe** (BeNeLux-Scandinavia), **Central Europe** (Germany, Austria, Switzerland), **South Europe** (France, Spain, Greece), **East Europe** (Czech Rep., Slovak Rep., Balkan countries, Russia) and **international** (UK, India, rest of world). The regional head of sales are Jules van der Weide, Cyril Heck, Jozef Trubacek and Charles Wilby. In their teams a great number of sales accounts have expertise in one or more domains, taking care of our major accounts and of vertical markets (engineering offices, steel fabricators, precast industry, scaffolding industry, ...).



And about the Nemetschek AG?

The Nemetschek AG has reported its best achievements ever in 2007; with a revenue of 146,2 Million € and an EBITDA margin of 23% the company is one of the strongest players in the AEC field. With its well-known product brands Allplan, Archicad, Vectorworks and ... Scia, Nemetschek is gaining market shares in many countries.

Together with its sister companies Friedrich & Lochner, Glaser, Nemetschek Allplan Engineering and Nemetschek Precast Engineering, Scia forms the **Nemetschek Engineering Group** with a revenue over circa 30 Million €, one of the largest software companies in the world focused on engineering software only.

We invite you to read more on www.nemetschek.com

Top

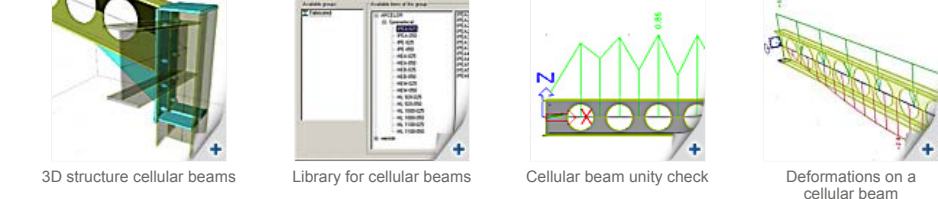
Product News: Scia Engineer – Cellular beams 'ENV 1993-1-1: 1992/A2'

The purpose of this software tool is to facilitate the design of cellular beams according to the principles of the Eurocodes. Thanks to the integrated 3D graphical interface, its use requires little extra familiarization time. The design of the cellular beam is done by using the ArcelorMittal ACB solver.

The beams are fabricated from I-shape hot-rolled profiles and the openings are circular. The upper and the lower chord may be from different base profiles and different steel grades. Scia Engineer is provided with a library of fabricated cross-sections delivered by ArcelorMittal.

The internal forces from any cellular beams are generated by the Scia Engineer solver in pre-defined sections of the beam. They are generated on different posts along the web openings.

These internal forces are used to check the Arcelor beam by the ArcelorMittal solver according to EC3 - Annex N: ENV 1993-1-1: 1992/A2.



The user can also perform the resistance checks at the Ultimate Limit States and a deflection check at the Serviceability Limit State. All checks give a fast graphical and/or numerical overview of (non) satisfying members.

Top



Market news: A gigantic dragon awaits the world at the Beijing airport

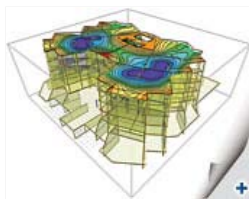
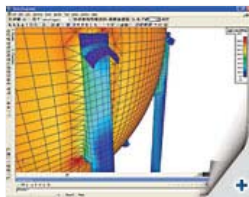
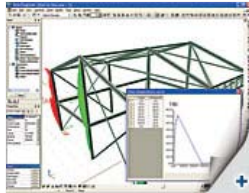
A few months before the launch of the Olympic Games this summer, the airport of Beijing has inaugurated its new terminal. Designed by architect Norman Foster in the shape of a dragon, it has to accommodate 25 airline companies.

170 football stadiums: that is the equivalent in surface of the new terminal of the international airport of Beijing. It was inaugurated on Friday by the Shandong Airlines society with a flight coming from Jinan, in the east of China. According to its architect, Norman Foster, the new terminal extends over 98 hectares; a surface that is larger than the five terminals gathered on the British airport of Heathrow.

The dragon-shaped terminal 3 measures more than 3 km and has cost about 2,7 billion dollars (1,8 billion Euros). Before the launch of the Olympic Games on 8 August, it has to accommodate 25 airline companies, which have to divert 500 000 visitors to Beijing. The airport, which is meant for 35 millions of passengers a year, already had 48 millions of visitors in 2007.



The works continued for four years and needed 50 000 employees. 10 000 inhabitants of new villages located in the north-east of the city had to move to make room for the new terminal.



Customer Project: Water treatment plant in Eupen (B)

About the company GESPLAN

The design office **GESPLAN** was founded in 1986 and is active in civil engineering, the construction industry (office, industrial, public and private buildings) and infrastructure works. The company also deals with environmental issues and problems regarding the sewer system and the public road network.



The project

Renovation works of the treatment for drinking-water in Eupen and Stembert.

The starting company (working mainly for civil engineering companies) had to realize the formwork and reinforcement drawings of the building from the architectural drawings realized by the Walloon water company.



By means of the Allplan software, Gesplan modelled a 3D building and reinforcement drawings. It went quite easily despite the fact that they proved to be quite complex, especially in the filter zone.

The structure of the building is as follows:

- Basement and first floor: water tank, pump chamber, the most important pipeworks and technical equipment.
- Above: 5 new calcite filters.
- Floors: the nanofiltration and different services.



The division of the building according to the different construction drawings, allowed the contractor to better define the execution stages (prefabrications, etc.) and the progress of his planning. The works have started in May 2006 and will be finished at the end of 2008.

The following modules have been very useful for the realization of the drawings:

- First of all the modules "Architecture" and "3D volume" to realize the 3D model (scale model style), the first for the simple volumes (sunk mattress, plate, shells, beams and columns), the second for the more complex volumes or volumes that are difficult to model (stiffening under plate, supports ...).
- Then the modules "Views and Cuts", "Reinforcement with bars" and "reinforcement by welded mesh" to realize the reinforcement in 3D.
- Finally the module "layout" and the "general modules" to realize respectively the presentation of the drawings and the addition of details.



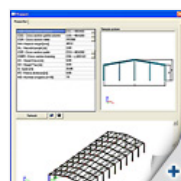
The use of the Allplan software allowed in the first place to create the 3D structure (in order to get a better insight of the building) and secondly to realize complete reinforcement drawings.



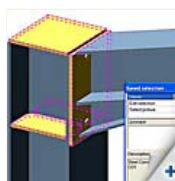
Tips & Tricks: Parameters in Scia Engineer

Are you handling repeatedly the same type of structures and you want to increase your output? We have just one word for you: **parameters**. You can assign a parameter to almost every entity in Scia Engineer.

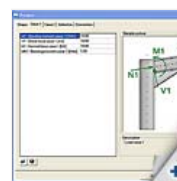
After the parameterisation, your project can be re-opened and adapted very easy. Usually, you have to create a parameter for each desired entity before it appears in the template dialogue. A special feature is that, instead of the previous method, you can create a named selection of the element that has to be parametric. For example for a steel connection:



Template dialogue



Saved selection of a steel connection



Parameterset of a steel connection: Internal forces



Parameterset of a steel connection: connection design

Subsequently, it appears automatically in the **template dialogue**. The next time you open this project, you will first get this template dialogue. That way, the correct input parameters can be chosen and you can immediately switch to the analysis of the project.

About this Nemetschek Scia eNews

- We would like to encourage you to give us your current e-mail address, if the one we used for this message, would not be correct or if you want us to send it to another address.
- If you would like to [unsubscribe](#) from this eNews, just send us an e-mail with 'unsubscribe' as the subject followed by the e-mail address to be deleted.
- Please let us know if there are any topics in which you are interested. We would also like to hear any suggestions or ideas you may have on improving this eNews. [You can respond here ...](#)

Scia Group nv • Industrieweg 1007 B-3540 Herk-de-Stad • Tel: +32 13 55 17 75 • Fax: +32 13 55 41 75

Nemetschek Scia • Copyright © 2008 • info@scia-online.com