



NL FR EN DE CZ

[Home](#) | [Company](#) | [Solutions](#) | [References & Markets](#) | [News & Press](#) | [Support & Downloads](#) | [Contact](#)

Latest News

May 2009

[▶ Printable PDF version](#)

Dear eNews reader,

In May birds hatch eggs ... so does Nemetschek Scia. We are happy to announce the **winners of the Nemetschek Engineering User Contest 2009** and we are proud to launch **new releases of our product portfolio: Scia Engineer, Scia Steel and Allplan 2009**.

Who are the Nemetschek Engineering User Contest Winners?

Amongst the **122 competing projects** in the User Contest there are **8 happy winners**: CSM nv (BE), Ney & Partners (BE), Mott MacDonald (CZ), IV-Consult (NL), BG-Ingénieurs Conseils (CH), Vahanen Consulting Engineers (FI), Tauw (NL) and BESIX (UAE).

The quality of the submitted projects, coming from 16 countries, is very high; we invite you to read more about the User Contest and the winning projects in the added [press release](#). [The User Contest book can be viewed and downloaded](#), or [you can order your personal hardcopy](#).

What are the new products launches of Scia in 2009?

Scia Engineer version 2009 is ready for shipment; it is named the 'X release' as it covers several X factors: **eXceptional performance, XML interoperability and EXCEL linking**. The performance increase is related to visualization and to analysis speed (64 bit). For a rapid overview on Scia Engineer vs. 2009 read our '[What's new in Scia Engineer 2009](#)'.

Scia Steel – the steel manufacturing software of Scia – is currently being renewed. The user interface is upgraded, the **handling of shipments** is enhanced, the **fabrication of steel plates** is much improved (manual nesting, splitting, graphical output, etc) and **time registration** is added, all in rel. 2009. To learn more, please read '[New in Scia Steel 2009](#)'.

And **Allplan version 2009** is on the market; the focus of this new release is '**enhanced ergonomics and interoperability**'. Allplan 2009 **supports a series of new file-formats** and offers a solution for long-term archiving i.e. the ISO-standard PDF/A-1a. Among the innovations there is a **GEO-module** for meshing up to 300.000 points, a function to map digital terrain models with ortho-photos and **several improvements to steel reinforcement** modelling and drawings. To learn more, please read '[New in Allplan 2009](#)'.

- ▶ The **winners** of the Nemetschek Engineering User **Contest 2009** are known! [more ...](#)
- ▶ Nemetschek Scia launches the new **Scia Engineer 2009 - the X release**. [more ...](#)
- ▶ Nemetschek Scia launches the new '**Scia Steel 2009**' release with 3D+. [more ...](#)
- ▶ **New Allplan 2009**, "Enhanced ergonomics and interoperability". [more ...](#)
- ▶ The **new Scia Engineer 2009 catalogues** are available. [Download it today](#) from our free downloads section.
- ▶ Read our "**What's new in Scia Engineer 2009**" brochure. [more ...](#)
- ▶ We kindly invite you to read our **White Paper** about "**Scia Scaffolding**: provide an accurate design and time-saving workflow". [more...](#)

Events

- ▶ Scia invites you and will be present on the Kaltenbach's **International Partners-in-Steel 2009** event from May 11 to 15. [more ...](#)

Software Update

- ▶ Customers can download the following **latest service packs** in our [secured download section](#). If you have a maintenance contract but nevertheless no access to this section, [you can apply for a username and password here](#).

- **Scia Engineer 2009.0.158a**
- **ESA-Prima Win 3.100.231**
- **Allplan 2008.0e1**

Training

- ▶ Visit our **interactive eLearning tool** through which distant learning of the basic functions of Scia Engineer becomes reality. [more ...](#)



- ▶ **Scia Engineer**
 - Basis course
 - Concrete
 - Dynamics
 - Non-linear calculation
 - Scaffolding

Interested in a **localised Scia Engineer training**? Please contact [Mrs. Kathleen Verhille](#) for details.

[Online training calendar](#).
[Subscribe online...](#)

- ▶ "Did you post your question in our **Scia Forum**? [Register today...](#)



The winners of the Nemetschek Engineering User Contest 2009 are known!

Last March, an international jury, composed of specialists from the academic and business world, gathered to judge the projects of the sixth edition of the Nemetschek Engineering User Contest 2009. All projects were evaluated on originality, level of complexity, technical expertise and correct application of the used software. More international than ever; this contest was open to all users of software from the Nemetschek engineering companies i.e. Scia Engineer, Allplan Engineering, Allplan Precast, Frilo statics and Glaser -isb cad-.

Many of the participating projects illustrate how building information modelling (BIM) and other data exchange possibilities between engineering design and CAD modelling are working in practice. All 122 participating projects are bundled in a colourful book of nearly 300 pages, explaining in detail the technical challenges and how the users solved these with the help of Nemetschek Engineering Group software. This book offers all participating companies a unique opportunity to show their know-how and professionalism to the outside world. As many as 13,000 copies are printed for free distribution. You can order your **free copy of the User Contest Book**, browse the online [flippable ebook](#) or [download it in PDF](#).



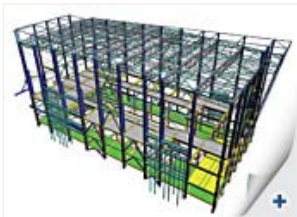
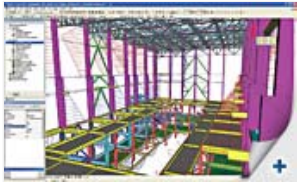
And the winners are ...

Cat.1: **CSM nv** (BE) with "Vörösmarty Tér 1 Multifunctional Building" in Budapest (HU)
 Cat.2: **Ney & Partners** (BE) with "Office Building Facelift Umicore" in Hoboken (BE)
 Cat.3: **Mott MacDonald** (CZ) with "Bridge over Vltava River" in Prague-Troja (CZ)
 Cat.4: **Iv-Consult** (NL) with "Hard-coal Power Station" in Karlsruhe, Rheinhafen (DE)
 Cat.5: **BG Ingénieurs Conseils** (CH) with "Shells of the Rolex Learning Centre" in Lausanne (CH)
 Cat.6: **Vahanen Consulting Engineers** (FI) with "Helsinki Music Hall" in Helsinki (FI)
 Cat.7: **Tauw** (NL) with "Extension and Renovation of Katwijk pumping station", in Katwijk (NL)
 Special prize of the jury: **BESIX** (UAE) with "The Tornado Building" in Doha (Qatar)



We sincerely congratulate all winners, nominees and participants individually. We also invite you to read the [latest press release of May, 4th](#).

- User Contest Nominee from Category 4: 'Engine room of the EPR of Flamanville' by Baudin Chateaufeuf (FR)



New: Scia Engineer 2009 - the X release



Many of us find themselves in search of an elusive X factor that stands, often in a metaphorical sense, for the ultimate eXperience, for something eXtraordinary, eXceptional and absolute. When preparing the version 2009 of Scia Engineer, we focused on X factors that create first class structural software: **Quality – Performance – Openness** and we have made **Scia Engineer 2009 - the X release**.

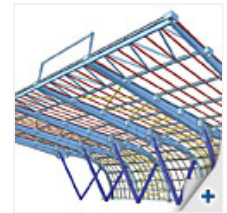
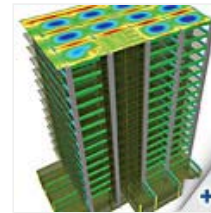
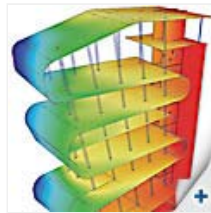
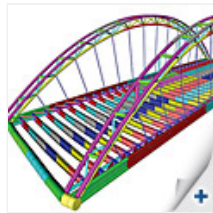
Quality

In the version 2009 of Scia Engineer we are coming up with numerous smaller improvements resulting in an increase of the overall performance. On the one hand, these improvements reflect the suggestions, remarks and requirements of our clients. On the other, they derive from our own professional experience.

Performance

Better **memory management**, one of the key X-factors in 2009, means namely the reduction in usage of computer resources, which in turn speeds up the computer response during modelling, design and optimisation of the structures. We have also optimised the Drawing Engine in Scia Engineer and got **faster redrawing of the structure including additional model data such as loads, supports, etc.** All this opens doors to the effective usage of Scia Engineer for the analysis of 'larger-than-ever' models.

More and more computers are equipped with **64-bit processors**. For this reason, the new solver in Scia Engineer has been developed for both 32-bit and 64-bit computing. In addition, the solver is able to use **all available processors in the PC hardware**. Both these refinements produce faster calculation, which is mainly noticeable for big projects (with several thousands of equations). Furthermore, huge structures can be calculated using the direct solver instead of the iterative one, which again results in a reduction of the calculation time.



Openness

The openness of the system can be perceived as a support of generally accepted formats such as **IFC, DWG, DXF, VRML, U3D** etc. and as a support of export to PDF including **3D PDF**.

On the other hand, the openness can have a broader meaning.

The X release focuses on the improvements of other means that allow for the exchange of data with third party programs via **XML interface**. Moreover, the users can link their own checks prepared in **MS Excel**© to Scia Engineer and use them the same way at other checks integrated in Scia Engineer.

We invite you to read more in the "What's new in Scia Engineer 2009" brochure.

New: Scia Steel 2009 3D+

Scia Steel offers increased functionality by adopting the latest tried and tested state of the art IT technology. Nemetschek Scia continues to offer its customers competitive advantage. Scia Steel ensures every steel project is **efficiently** executed throughout the whole production process so that it is on time, at **reduced cost**.

Following continuous consultation with our customers the development of the new version was focused on:

- Planning
- Project-management
- Nesting of plates
- Shipments

To achieve a major order of magnitude increase in the competitive advantage of our customers, development of a new generation 'Scia Steel' is also in full swing. Fitting perfectly within the 'BIM' (Building Information Modelling) approach this will put complete 3D information at the fingertips of our users. In addition to the present functionality the future version will be able to offer 4D (project with progress in time) and even 5D (project with full cost estimating) information on the project.



The following modules are already available:

- Project-Model-Estimating
- Project-Progress
- Project-Document-Management

Scia Steel 3D+

"IFC" is now established in the building industry as the new integration standard. IFC describes the entire 3D structure; for the steel part as well as for all other construction parts (concrete, reinforcement ...). Most of the commonly used CAD software for steel construction has an IFC export facility.

Scia Steel uses this to visualize their CAD model and data and to add extra information:

- Status (drawn, approved, in production, delivered, assembled...)
- Management of the list of elements
- Production drawings, order forms...
- Cost accounting



Via a free definable cost **accounting methodology** (via XML technology) it is possible to calculate the cost automatically for each separate element and consequently for each project. This cost calculation can be used for drawing up proposals, production budgets...

More and more Scia customers use this cost accounting in conjunction with [Scia Engineer](#). After the design of a structure it is possible to quickly draw up an estimate of the cost of the entire project. In the near future all 3D+ functionality will be available in Scia Steel.



New: Allplan 2009, "Enhanced ergonomics and interoperability"

With Allplan 2009, Nemetschek goes through on the zest of version 2008: the user is at the centre and gets new and improved existing tools at his or her disposal so as to do the work as efficiently as possible.

Ergonomics

In addition to the building structure, intended for structuring and organizing the 2D/3D model, there has been developed a new **Drawing structure** for the organisation of the various documents according to own criteria or hierarchic levels. The **pallets** have also been expanded: some toolbars have become superfluous and various buttons have been grouped in well-organized dialogues. The user logic "**Select first, modify afterwards**" can now be applied on a larger scale. **Screen favourites** combine separate principles and allow fast switching between the various representation modes of the same model.



movie 1

Interoperability (movie 3)

Good communication with third parties is essential for a successful project. To this end, the existing protocols (DWG/DXF and DGN) were optimised and a few other formats have been implemented. There is now an **improved bi-directional exchange** with **Cinema4D** (rendering and animation), **Rhino** (organic forms) and **VRML** (rapid prototyping) available. Also less know formats, such as **U3D** (Universal 3D) and **MXS** (MaxwellRender), are available. For long term archiving, Allplan 2009 offers the ISO-format **PDF/A-1a**.

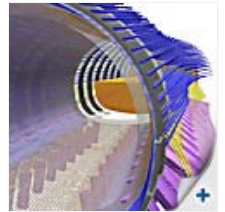


movie 2

Architecture

Renovation projects, such as e.g. changes in purpose, upgrading of unoccupied dwellings, and so on, become more and more important. Reason enough to support architects by offering them new functionality, e.g. the **Renovation Module**. With this module it is a piece of cake to make a clear difference (representation mode and colour scheme) between building elements which existed already, which have to be demolished and the new ones. The **Facade Modeller** (movie 1) also underwent a make-over with almost unrestricted possibilities as result. Sustainable design is hot. In order to offer a suitable answer to this challenge, Nemetschek entered a partnership with specialists in that field. Allplan 2009 offers a free **Energy-indicator**, a **Photo-voltaic** as well as a **Solar-thermal** module for simple predimensioning.

High-end versions of these functionalities go more deeply into this matter and are separately available.



movie 3

Engineering

More and more engineering functionalities are revised in accordance with the pallets philosophy. It is now possible to adopt the **linear placement** from the pallets on, for the definition as well as for modifications. Where necessary, the **circular/spiral reinforcement** (movie 2) has been improved. The **Geo-module** has the possibility to mesh up to 300.000 points. It is also possible to map the **digital terrain model** with **ortho pictures**.



About this Nemetschek Scia eNews

- We would like to encourage you to give us your current e-mail address, if the one we used for this message, would not be correct or if you want us to send it to another address.
- If you would like to **unsubscribe** from this **eNews**, just send us an e-mail with '**unsubscribe**' as the subject followed by the e-mail address to be deleted.
- Please let us know if there are any topics in which you are interested. We would also like to hear any suggestions or ideas you may have on improving this eNews. [You can respond here ...](#)
- If you are not yet receiving the monthly Nemetschek Scia eNews, [you can subscribe here](#).



Scia Group nv • Industrieweg 1007 B-3540 Herk-de-Stad • Tel: +32 13 55 17 75 • Fax: +32 13 55 41 75

Nemetschek Scia • Copyright © 2009 • info@scia-online.com