

NL FR EN DE CZ

[Home](#) | [Company](#) | [Solutions](#) | [References & Markets](#) | [News & Press](#) | [Support & Downloads](#) | [Contact](#)

September 2011

Latest News & Events

- Nemetschek Scia invites you to the **Scia Engineer 2011 Release Days**:

- 5 Sept. 2011 in Affligem (B-VL)
- 6 Sept. 2011 in Wavre (B-WA)
- 8 Sept. 2011 in Arnhem (NL)
- 4 Oct. 2011 in Paris (F)
- 5 Oct. 2011 in Lyon (F)
- 25 Oct. 2011 in Chexbres (CH)

Discover the new and improved functionalities of Scia Engineer!

- Visit our [Webshop](#) and take advantage of our **special offers!**

FREE Webinar

FREE Webinar on 15/09/11 (NL)
>> Participate and receive a 15 % discount voucher...
Concrete design made easy...

FREE Try-out!

Start a FREE full Try-out today.
Now with Free iTunes Gift.
>> Sign-up or read more...
Get your own cloud server...

- Acceptance of **Scia Engineer** by **UAE municipalities**. [Read more...](#)
- All you need to know on the Eurocodes...
Visit www.eurocodes-online.com
- Join our **new IQ Platform** and contribute to the **future evolution of Scia Engineer!**
- Scia invites you to participate in the survey: **"Users of Software for Design and Engineering"**
- Are you a **student or professor?**
[Download Scia Engineer for free...](#)

Software Updates

- Customers can download the **latest service packs** from our [secured download section](#).
 - Scia Engineer 2011.0.236
 - Scia Steel 2011
 - Allplan 2011.1 HF3
 - Allplan Precast 2010.1-2
- Get an **automatic notify** through RSS when a **new Scia Engineer Service Pack** is available.

Training & Support

- Free interactive eLearning.**

- Group trainings for **Scia Engineer, M Series, Allplan...**
Consult our [training agenda](#) and [register online...](#)

Welcome to the **September 2011** issue of the **Nemetschek Scia eNews**. This newsletter will keep you posted on company news, fascinating projects, useful tips and tricks and upcoming events.

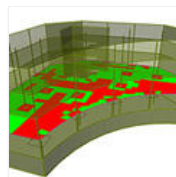
- **NEW release Scia Engineer 2011** - The new features at a glance
- **NEW: Scia Engineer links with ECtools** - Eurocodes Seismic Design of R/C buildings
- **User Contest 2011** - Winning Project Category 1: River House - Prodis plus s.r.o.
- **Tips & Tricks Scia Engineer: Styles of toolbars in Scia Engineer**

NEW release Scia Engineer 2011 - The new features at a glance

One of the main themes of **Scia Engineer 2011** is **User Experience**. User-experience is about the interaction between an engineer and his software. One of the outcomes of our 2010 customer surveys is the introduction of integrated **Table Input**, which gives new opportunities for numerical input and adjustments. A link with MS Excel offers new modelling tools for the Scia Engineer user!



Release 2011



Crack check for 2D members

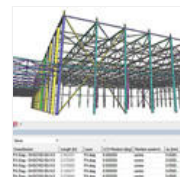


Table input



EC8 seismic checks

Other enhancements have been added to modelling (e.g. graphical input of buckling systems and the apply command), loads (e.g. copy loads from one load case to another and projection of load panels), analysis (interval for results and user-defined LCS for curved surfaces), documentation and much more.

Obviously, Nemetschek Scia continues the development of **Eurocodes in Scia Engineer**: the current set of implemented National Annexes has been extended and also the latest versions including correction sheets were integrated. In this new version, the design of EC8 for Reinforced Concrete and Masonry buildings is supported via a specialized integration of ECtools. (explained in the article below).

Using the openBIM approach, including the application of **Solibri** software, the structural engineer easily controls his dataflow process without affecting working habits of others. Scia Engineer, as the first CAE program with the **IFC2x3** certification, promotes **openBIM**, meaning the exchange of models between applications through a versatile open standard. Version 2011 presents an extended graphical environment for transforming the structural model into the analysis model.

Besides all these new features, Nemetschek Scia offers a new secure service for customers wanting to embrace a new trend in IT: **Cloud Computing**. This new service, called **Scia Desk**, allows them to store and share their project files 'in the cloud', i.e. on the internet. You can start a 2 week try-out for free: [Sign-up or read more...](#)

Interested to know more about these new possibilities? Read the document **'What's New in Scia Engineer 2011'** or visit us during the Nemetschek Scia release tour! [top](#)

NEW: Scia Engineer links with ECtools - Eurocodes Seismic Design of R/C buildings

The Eurocodes have become the design standards for the structural and civil engineering world. One of these 10 standards is **Eurocode 8** for the design of structures for earthquake resistance. Buildings and other civil engineering works located in regions with high seismic hazard need to be checked in accordance with the provisions of this code.

With this in mind, Nemetschek Scia joined forces with the Greek company **3π-Penelis Software Ltd** (subsidiary of Penelis Consulting Engineers SA), a structural design office with projects in many countries with high seismic risk. Their software, called **ECtools**, has been extensively tested within the design office as well as in many universities and its predecessor, eTools, has been in use since 2002 in Greece and Cyprus.

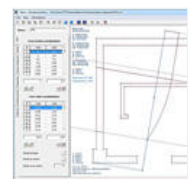
The main purpose of the link with ECtools is to perform **capacity checks according to EC8 of R/C structures modelled in Scia Engineer**.

Furthermore, for the seismic analysis of tall buildings it is the common practice of EC8 to look at the core and shear wall as a continuous vertical element. However, in Scia Engineer, the walls are modelled as separate 2D finite elements in order to obtain more accurate results. With ECtools, the user is able to do this **recognition-conversion** automatically, using a 3D integration of 2D shell element stresses to internal forces on the corresponding complex cross-section. By achieving that, the seismic analysis is performed according to the principles of EC8. This approach gives the user **more insight into the results**.

ECtools uses the analysis results of Scia Engineer and can be used in the following cases:

- Seismic Design of Reinforced Concrete Buildings
- Checking/Reviewing the Design of Reinforced Concrete Buildings
- Seismic Assessment and Retrofitting of existing Reinforced Concrete Buildings
- Seismic Design of Composite Buildings with Concrete Cores
- Seismic design of Unreinforced Masonry Buildings
- Seismic Assessment and Retrofitting of existing Unreinforced Masonry Buildings

Scia Engineer and ECtools: a winning match for the safety of your designs!

[top](#)

User Contest 2011 - Winning Project Category 1: River House - Prodis plus s.r.o.

This month the **winner** of 'Category 1: Buildings' of the **Nemetschek Engineering User Contest 2011** is given attention

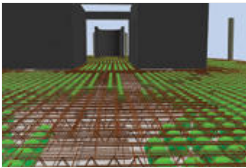
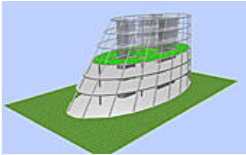




- ▶ Interested in an individual customized training at your offices? Please contact Mrs. K. Verhille.
- ▶ Any questions? Put it on the Scia Forum! Register...

Software Gallery

- ▶ **The Curve** - Amsterdam (the Netherlands)
Thanks to **BubbleDeck**.



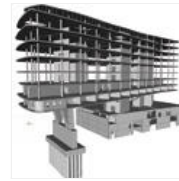
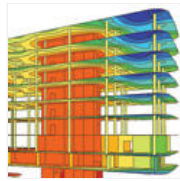
Follow Nemetschek Scia



to. It is Nemetschek Scia's Slovak customer **Prodis plus s.r.o** with the spectacular '**River House**' project.

The River House is the dominant building of the multifunctional River Park complex on the left bank of the Danube River in Bratislava. The complex consists of four blocks which include 203 luxury residences, above-standard offices and a five star deluxe hotel.

This remarkable building consists of eight storeys which are carried by a prestressed concrete transfer structure on the level of the 1st and 2nd storey. The transfer structure is supported only by two massive cores and a pair of piers on the bank of the river. The flat slabs of the typical storeys have a complicated shape with several levels, various thicknesses and spans. The largest bay has a span of 8.80 x 7.35 m.



The foundations of the River House comprise 900 and 1.200 mm diameter bored piles embedded to the stone base. In the basement a "white tank" waterproof concrete system is applied which has to resist hydrostatic pressure from underground water.

Quote of the Jury: "The River House is selected because of its irregular trapezoidal shape, cantilever overhangs of 16 m and floors with curved rims, prestressed concrete transfer structure with two building phases. Several software options were applied, e.g. seismic analysis and optimization. Deflections were very important with regard to the glass façade. Long-time monitoring showed good accordance with the analysis results."

Daniel Kona of Prodis plus s.r.o received his prize at the Statika Conference 2011 in Nove Mesto na Morave (CZ) from the hands of Milan Hric (Scia SK). Congratulations to the whole Prodis plus s.r.o. team!

- ▶ [Play Movie](#) or ▶ [Download the pdf of the 'River House'](#)

[top](#)

Tips & Tricks Scia Engineer: Styles of toolbars in Scia Engineer

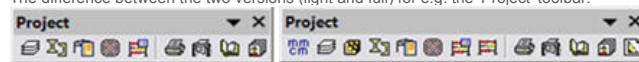
In Scia Engineer the customer can choose which toolbar style has to be applied, and it's even possible to personalize the toolbars.

The choice is made via the **Setup** menu > **Options** > **tab Environment** > **Current style of toolbars**, see **image 1**.

In recent Scia Engineer versions the default setting is the 'Light' version. With this setting the toolbars contain a selection of the most frequently used icons (as determined by means of a survey).

Should you prefer the full set of icons to be available within the toolbars, then it is possible to choose for the '**Full toolbars**' version. If you change to this version, Scia Engineer has to be closed and re-opened to load the chosen version.

The difference between the two versions (light and full) for e.g. the 'Project' toolbar:



The third option is the version '**Customized by user**'. When changing to this version, Scia Engineer has to be closed, re-opened and the chosen version has to be loaded. Afterwards you can manually adapt the original toolbars and/or create new toolbars, at which the modifications are maintained. Please proceed as shown in **image 2**.

Via an arbitrary toolbar you open the 'Customize' window. Create a new bar on the 'Toolbars' tab and after this an overview of all available icons within Scia Engineer appear on the 'Commands' tab.

Choose for example from the 'All Commands' category the icon 'Show / Hide FE mesh'. By dragging and dropping it with the cursor, this icon is added to the desired toolbar:

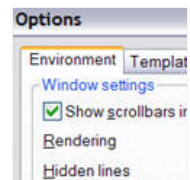


image 1

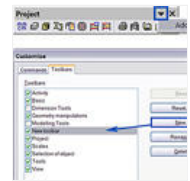


image 2

[top](#)

If you are not yet receiving the monthly Nemetschek Scia eNews, [you can subscribe here](#) ...